

PREMIUM  
COATING  
SOLUTIONS  
FOR  
INDUSTRIES

PRODUCT CATALOGUE





# The PVE Premium Solutions

The mission of Pintaväri Eesti OÜ is to offer the best solutions of high quality surface finishing along with technological consultations and professional training courses.

Pintaväri Eesti OÜ is one of the leading professional partners of surface finishing workshops in Estonia. Several painting workshops of well-known car salons have been designed and equipped in cooperation with Pintaväri Eesti. We have installed more than 30 Spray Booths and work preparation areas in different workshops in Estonia.

We offer our partners only the best, considering their actual needs and wishes. Through cooperation, we achieve a result that enables the workshop to offer a competitive price on the market and making profit at the same time.

The objective of the company is to do long-term cooperation and offer high-quality products and services along with technological consultations and professional training to our customers.

Our professional team will help you with designing, equipping, renovating and maintaining your workshop. In addition, we offer professional consultations for your company's management team.

## **PINTAVÄRI EESTI OÜ**

Sära tee 11/4, Tallinn 75312

[info@pintavari.ee](mailto:info@pintavari.ee)

Tel. +372 6556 118

[www.pintavari.ee](http://www.pintavari.ee)

# TABLE OF CONTENTS



**1**

**Powder Coats**

**4**

**2**

**The suspension hooks, clamps**

**10**

**Racks and trolleys**

**16**

**3**

**Tapes, taping equipment, masking paper**

**21**

**4**

**High temperature silicone masking products**

**25**

**5**

**Powder coating equipment**

**41**

**Curing ovens**

**47**

**6**

**Percotop® coatings**

**50**

**Wet coating equipment**

**56**

**Accessories for surface finishing**

**60**

**7**

**Packaging Materials**

**65**

# POWDER COATS

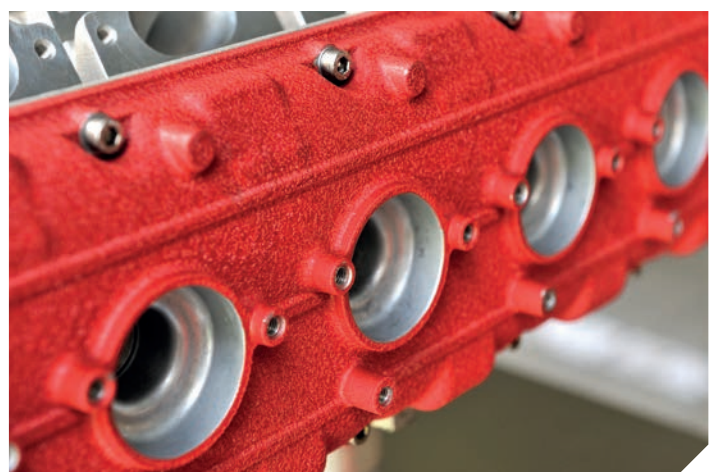
Powder Coats for many applications

## Powder coating is our passion.

Powder coating is one of the most highly-favoured surface treatment methods in the metal industry. Powder coats consist of resin, pigment, hardener, fillers, and additives. Powder coats do not contain solvents or heavy metals, which means that they are environmentally friendly. The ingredients determine the coatings characteristics, colour, structure, gloss, and so on. Powder coats are divided by their resin or binder agent content into epoxy, epoxy-polyester (hybrid), polyester, and polyurethane paints. The epoxy-powder coats are meant for interior applications and have good shock-resistance properties, along with being chemically durable, although they are susceptible to UV radiation. The epoxy-polyester coatings are meant primarily for painting interiors and for decoration. The most common type is polyester powder coat, which is suitable for outdoor conditions and is weatherproof as well as being resistant to UV light.

The polyurethane powder coat is used when the finished details need to be able to resist extreme exposure. In the powder coats range you will find a zinc primer that provides good levels of corrosion resistance to steel, anti-graffiti paint which can be used on surfaces in public spaces and is easily cleanable, and the anti-bacterial coat that is a necessary requirement in the food industry. We also are able to offer powder coatings that conduct electricity and are heat resistant. With powder coatings you can create special surface structures such as an orange effect, a sandpaper effect, and a hammer varnish. In addition, the range includes coatings which provide a matt, semi-gloss, or full gloss finish.

The packaged powder coat is ready to use, which always ensures the desired final result - a suitable gloss surface effect and tone. When selecting a tone, you can use the RAL or the NCS card, but it is also possible to prepare all of the special tones. Unfortunately, the selection of special tones is still very limited in Europe, although it is extremely popular amongst powder coaters in the USA. The Pintaväri Eesti OÜ product range includes a wide variety of special coatings (such as varnishes, metallic tones, candy, glow-in-the-dark, chrome, and other tones), which are also available in smaller quantities. Our aim is to provide European powder coaters a colour selection that is comparable to that of the USA as well as a convenient ordering environment.





# POWDER COATS

Our powder coating product range

## THERMOSET POWDER COATING

### AG-KOTE™

- Anti-gassing properties over porous substrates
- Low temperature cure
- Excellent chemical, stain and scratch resistance
- Superb spraying properties
- Outstanding corrosion resistance and UV protection
- Cost and energy savings due to decrease in oven temperatures
- Ideal for galvanized steel, cast iron and aluminum.

### CURVECOAT™

- Allows post bending without cracking or chipping
- Dramatically reduces material handling issues
- Lowers transport and packaging costs
- Ideal for precision sheet metal, rebar, metal cans, wall panels, sprinkler tubes and coils and springs
- Protech proprietary technology

### EF-SERIES™

- Superior resistance to cathodic disbondment and delamination
- Ideal as one coat pipe protection or base for three coat application
- Highly flexible
- Excellent adhesion to steel and other potentially oily metallic substrates
- Ideal application for concrete reinforcing bars and pipes
- Meets ASTM A-775
- Approved by the U.S. Federal Highway Administration for the protective covering of shot blasted bars
- Inert coatings compliant with global regulatory agencies (eg FDA) requirements for direct contact
- Consistent smooth 360 ° finish

### NUVOCOAT®

- Energy savings
  - UV curing
  - significantly faster curing times
- Time savings
  - shorter oven dwell period
  - no cooling down stage required
  - less sanding needed for MDF products
  - only single layer of application required
- Space savings
  - less floor space required
- Ability to coat heat sensitive substrates and temperature-sensitive pre-assembled products
- Adaptable to three-dimensional objects
- Superb edge coverage (MDF)
- Produces very durable finish
- High chemical resistance
- Suitable for multi material parts

### STERILCOAT-AM®

- Kills over 99.99% of surface microbes
- Inhibits the growth of dangerous bacteria, mold, mildew and fungi
- Provides protection over an extended period of time
- Reacts to an increase in humidity by releasing more silver ions
- Retains anti-microbial properties even after repeated washings
- Can be formulated for exterior durability
- Outstanding durability

### CLONECOAT™

- Forms a complete bond with SMC substrate
- Outstanding chemical, scratch, stain, graffiti resistance and hardness
- Clones any molding tool (smooth to textured)
- Superior outdoor durability with excellent water and UV resistance
- Eliminates post-painting operation
- Seals pores and isolates fibers in the molding step
- Effective as a primer or finished top coat
- Homogeneous surface produced as powder reacts chemically to the SMC
- No ovens needed as powder is cured in the mold

### E-BOND™

- Optimum metallic effects
- Consistent batch to batch appearance
- Excellent application characteristics with reduced gun-blocking and picture framing
- Greater reclamation of over sprayed powder
- Improved safety characteristics during application process
- Protech proprietary technology
- Widest range of metallic finishes

### NANOFOIL®

- Unique formulations and manufacturing processes yield a remarkably ultra-thin powder
- Powders able to be sprayed at between 0.80 mils and 1 mil
- Superb transfer efficiency and excellent, consistent smooth appearance
- Provides time, energy and space savings as well as lower transportation costs
- Environmental benefits as less packaging and less disposal required
- Excellent durability and chemical resistance

### PERMASLIP®

- Extremely low-coefficient of friction allows interlocking or meshing products to slide effortlessly
- Extremely durable and chip resistant
- Excellent chemical, stain, and scratch resistance
- Ideal application for shopping carts, drawer slides, earth-moving machinery and snow removal equipment

### SOL-AR™

- Architectural powder coatings formulated with fluoropolymer resins ensuring outstanding weather performance and excellent resistance to UV light
- Meet the requirements of AAMA specification 2605
- Available with a ten-year guarantee
- Do not require a primer
- Superb abrasion, corrosion and mar resistance
- Ideal application for railings and other heavy traffic areas

### AUTOMOTIVE POWDER COATINGS

- Complete line of topcoats, primers, and underbody powders
- Approvals from major OEM car manufacturers
- On-site technical support

# POWDER COATS

Powder Coats for many applications

## VELVACOAT™

- Soft-touch feel
- Available in a non-tarnish e-bond metallic
- Superior over-bake resistance
- Unique “reflective” appearance
- Ideal for store fixtures, bike frames, patio furniture, bottles, automotive wheels, design furniture and aluminum extrusions

## Z-SERIES™

- Meets the five year Florida exposure requirements as set forth in AAMA 2604
- Excellent adhesion, humidity resistance and water immersion resistance
- Outstanding corrosion protection and UV durability
- Excellent mechanical properties including outstanding flexibility
- QUALICOAT Class 2 - Category 3 approved
- Ideal for outdoor lamp posts, mail boxes, agricultural and construction equipment, playground installations, traffic signs, aluminum extrusions and steel roof tiles

## THERMOLAM™

- One coat application process
- Compatible with conventional powder application systems
- Wide choice of appearance capabilities
- Less sanding required for MDF products
- Significant energy, time and space savings
- Low temperature cure permits wide range of wood substrates to be powder coated
- Design friendly--provides excellent edge coverage on conventional and multi-faceted pieces

## X-GRAF®

- Formulated to allow graffiti to be easily removed using commercially available solvents.
- Excellent stain resistance and extremely durable
- Outstanding corrosion resistance and weatherability
- Ideal for mail boxes, traffic signs and high visibility signs, telephone switching gear, playground equipment, bus shelters, lockers and bathroom partitions

## THERMOPLASTIC POWDER COATING

### DURABOND

- Offers outstanding hardness properties
- Formulated with excellent flow properties to produce a smooth finish without additional additives
- No primer required
- Excellent alternative to nylon based coatings

### DURAPEARL

- High performance PVC thermoplastic powder coatings
- Outstanding durability
- Steam and stain resistance
- Ideal coating solution for dishwasher racks, dryer racks, and freezer baskets

### DURAVIN SDG-1M-1

- Formulated to meet the performance requirements of wire goods manufacturers
- Available in low-smoke plasticizer technology

### WATERARMOR™

- NSF 61 Certified
- Bisphenol A (BPA) free
- No primer required
- Excellent adhesion
- Superb impact and chemical resistance
- Flexible coating that will not crack or chip if bent
- Repairable on and off site
- Allows for over-coating and recoating
- Extremely high resistance to UV exposure
- Thermoplastic chemistry allows for no required curing
- Low-temperature and quick flow out
- Ultra-smooth finish provides increased flow rates
- Fluidized bed or spray application
- Made in North America

### DURALLOY

- No primer required
- Excellent performance characteristics
- Significant cost savings

### DURAPOL

- Lower-cost alternative to nylon powders
- Remarkable hardness properties

### ENCASE™

- Meets FDA standards for direct food contact
- Provides outstanding impact and chemical resistance and demonstrates excellent flexibility

### POLYARMOR®

- Multi-purpose line of thermoplastic powder coatings
- Superb impact resistance and excellent UV protection
- Requires no primer and no cure time
- Can be applied both by fluidized bed or electrostatic spray
- Ideal solution for outdoor furniture, bike racks, playground installations, hand railings and many others

### GLAS-LOK®

- Developed specifically for the safety coating of glassware and ceramic products
- Greatly reduces the risk of glass and ceramics shattering upon contact
- Available in transparent colors
- Ideal solution for fluorescent light bulbs and high-end chandeliers

# POWDER COATS

Powder Coats for many applications

## FEATURE

- » Polyester powders for outdoor
- » Epoxy powders for indoor use
- » Epoxy/polyester

- » Polyretan
- » All Ral range colors
- » Special tones. Clear coats, metallics



STONE
ACRYLIC CLEAR COAT
CLEAR COAT
CHROME
CANDY BLUE
CANDY RED
CANDY GOLD
CANDY GREEN
SILVER BRIGHT
DARK SILVER GREY
TOP COAT WITH GLIMMER
GLOW IN DARK

\*Standard Ral colors available

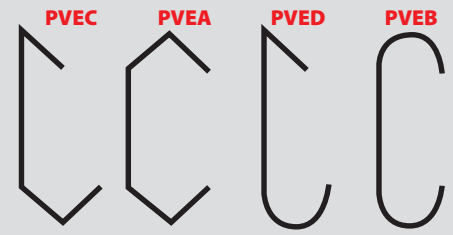




# HOOKS FOR POWDER COATING

Hanging parts during powder coating, e-coating or wet coating

- » We offer wide range of hanging hooks for surface treatment.
- » Hooks are made from copper plated spring steel to assure good contact and load capacity.
- » Our good sortiment of hooks, helps our customer to improve their surface treatment quality and get more output from their coating line.

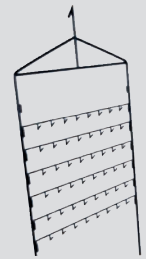


## Standard product range:

Length ↓ Diameter →	2	3	4	5	6	8	10	12
50	x	x	x	x	x			
75	x	x	x	x	x			
100	x	x	x	x	x	x	x	x
150	x	x	x	x	x	x	x	x
200	x	x	x	x	x	x	x	x
250	x	x	x	x	x	x	x	x
300	x	x	x	x	x	x	x	x
350	x	x	x	x	x	x	x	x
400	x	x	x	x	x	x	x	x
450	x	x	x	x	x	x	x	x
500	x	x	x	x	x	x	x	x
600	x	x	x	x	x	x	x	x
700		x	x	x	x	x	x	x
800		x	x	x	x	x	x	x
900		x	x	x	x	x	x	x
1000		x	x	x	x	x	x	x
1300		x	x	x	x	x	x	x

Custom sizes and shapes available upon requests.

We do not only sell customized hooks and racks- we sell solution. You are more than welcome to send Your hanging problem to us and let us offer You a good solution from our product range or we customize good solution for You.



Wide range of racks available upon request.

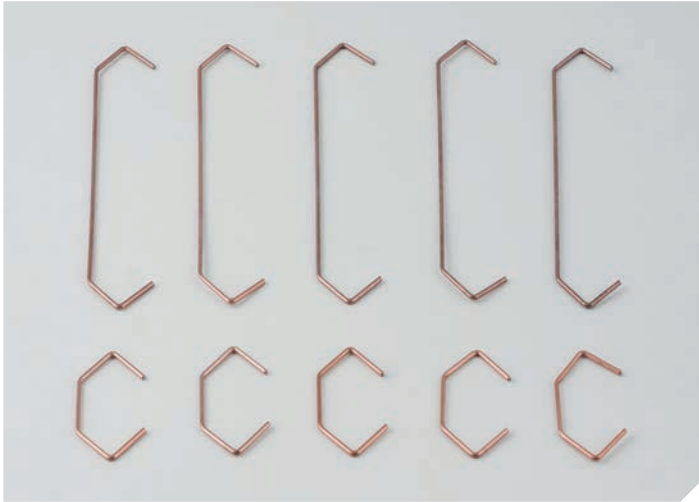
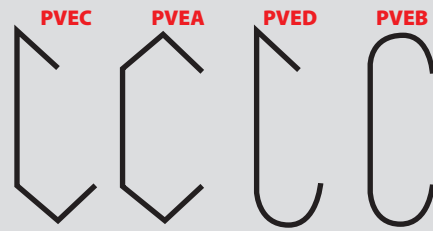


# HOOKS FOR POWDER COATING

Hanging parts during powder coating, e-coating or wet coating

## FEATURE

- » Available diameters 2mm-10mm
- » Available lengths 50mm to 1000mm



HOOK SIZE	PCS/BOX	item code
2X50	5000	PVEA-h2x50
2X75	5000	PVEA-h2x75
2X150	1000	PVEA-h2x150
3X150	1000	PVEA-h3x150
3X150 90DEGREES	1000	PVEA-h3x1500.90
2X100	2000	PVEA-h2x100
2X100 90DEGREES	2000	PVEA-h2x1000.90
3X100	1400	PVEA-h3x100
3X100 90DEGREES	1400	PVEA-h3x1000.90

Ordering hooks use the code key:

PVE (hook type A) PVEA

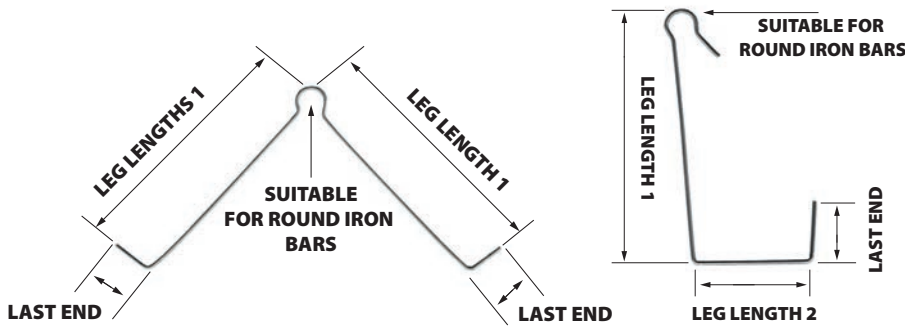
Wire diameter 2mm then PVEA-2

Hook length 500mm then PVEA-2x500

If hook is bended 90 degrees Then PVEA-2x500.90



# CLIP HOOKS



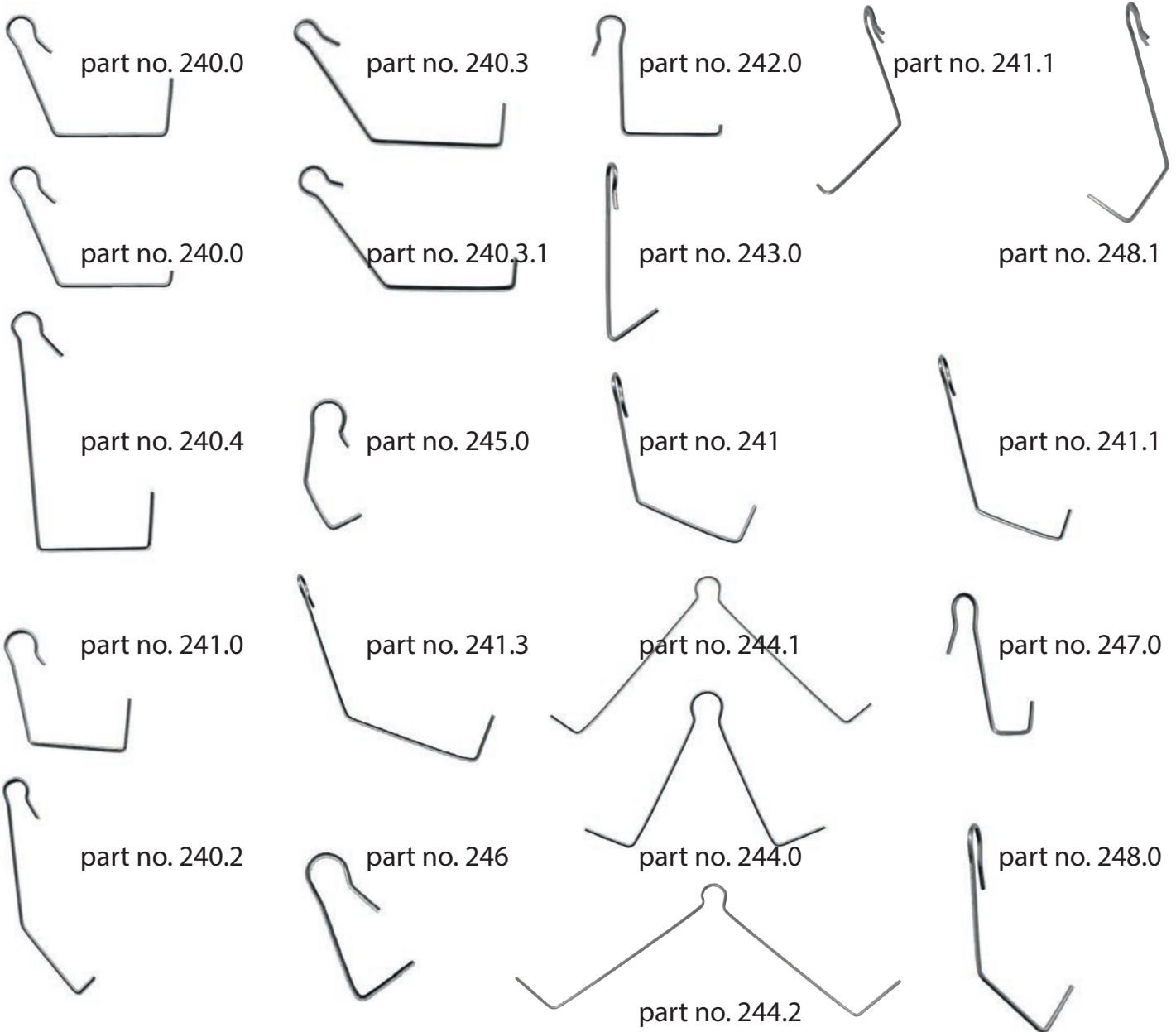
## CLIP HOOKS

Clip hooks made of 1- 1.25 mm spring steel, hardened, suitable for 6-8 mm Ø round iron bars.

Part no.:	wire ø	leg length 1	leg length 2	last end	for round iron bars
240.0 0008 0001 0600	0,8 mm	30 mm	25 mm	10 mm	6,0 mm
240.0 0010 0000 3600	1,0 mm	30 mm	25 mm	3,0 mm	6,0 mm
240.0 0010 0000 7600	1,0 mm	30 mm	25 mm	7,0 mm	6,0 mm
240.0 0010 0001 0700	1,0 mm	30 mm	25 mm	10,0 mm	6,0 mm
240.0 0010 0001 5600	1,0 mm	30 mm	25 mm	15,0 mm	6,0 mm
240.0 0010 0001 5602	1,0 mm	100 mm	25 mm	15,0 mm	6,0 mm
240.0 0010 0001 5603	1,0 mm	50 mm	25 mm	15,0 mm	6,0 mm
240.0 0010 0001 5604	1,0 mm	30 mm	25 mm	15,0 mm	6,0 mm
240.0 0010 0001 0690	1,0 mm	30 mm	25 mm	10,0 mm	6,0 mm 90° turned
240.0 0012 0001 5800	1,2 mm	50 mm	25 mm	15,0 mm	8,0 mm
240.1 0010 0001 5800	1,0 mm	30 mm	25 mm	15,0 mm	8,0 mm
240.1 0012 0001 0800	1,2 mm	30 mm	25 mm	10,0 mm	8,0 mm
240.1 0010 0001 0800	1,0 mm	30 mm	25 mm	10,0 mm	8,0 mm
240.2 0010 0000 7600	1,0 mm	40 mm	25 mm	7,0 mm	6,0 mm
240.2 0010 0000 3600	1,0 mm	40 mm	25 mm	3,0 mm	6,0 mm
240.3 0012 5001 0610	1,25 mm	40 mm	40 mm	10 mm	6,0 mm
240.3 0012 5001 0810	1,25 mm	40 mm	40 mm	10 mm	8,0 mm
240.3 0012 5001 5600	1,25 mm	40 mm	40 mm	15 mm	6,0 mm
240.3 0012 5001 0710	1,25 mm	40 mm	40 mm	10 mm	7,0 mm
240.4 0012 5001 0000	1,25 mm	50 mm	30 mm	10 mm	6,0 mm
241.0 0008 0001 0690	0,80 mm	30 mm	25 mm	10 mm	6,0 mm 90° turned
241.0 0010 0001 0690	1,0 mm	40 mm	40 mm	10 mm	6,0 mm 90° turned
241.0 0012 5002 0690	1,25 mm	30 mm	25 mm	10 mm	6,0 mm 90° turned
241.0 0010 0001 0690	1,0 mm	30 mm	25 mm	10 mm	6,0 mm 90° turned
241.1 001 00001 0890	1,0 mm	30 mm	25 mm	10 mm	8,0 mm 90° turned
241.1 0010 0002 0890	1,0 mm	30 mm	25 mm	20 mm	8,0 mm 90° turned
241.2 0010 0000 7690	1,0 mm	40 mm	25 mm	7,0 mm	6,0 mm 90° turned
241.3 0012 5001 5890	1,25 mm	40 mm	40 mm	15 mm	8,0 mm 90° turned
241.3 0012 5001 5690	1,25 mm	40 mm	40 mm	15 mm	6,0 mm 90° turned
242.0 0010 0000 3600	1,0 mm	30 mm	25 mm	3,0 mm	6,0 mm S-shape
243.0 0010 0001 5690	1,0 mm	45 mm		15 mm	6,0 mm 90° turned
243.0 0010 0000 7690	1,0 mm	45 mm		7,0 mm	6,0 mm 90° turned
244.0 0010 0001 5600	1,0 mm	45 mm	45 mm	15 mm	6,0 mm twin hooks
244.0 0010 0001 5800	1,0 mm	45 mm	45 mm	15 mm	8,0 mm twin hooks
244.1 0010 0001 0604	1,0 mm	55 mm	55 mm	4,0 mm	6,0 mm twin hooks
244.1 001 00001 0600	1,0 mm	55 mm	55 mm	10 mm	6,0 mm twin hooks
244.2 0001 0001 0600	1,0 mm	45 mm	45 mm	10 mm	6,0 mm twin hooks
245.0 0010 0000 7600	1,0 mm	15 mm	10 mm	7,0 mm	6,0 mm
246.0 0010 0001 0600	1,0 mm	25 mm	10 mm	6,0 mm	6,0 mm
247.0 001 00001 0690	1,0 mm	30 mm	10 mm	10 mm	6,0 mm 90° turned
248.0 0010 0001 0690	1,0 mm	25 mm	25 mm	10 mm	6,0 mm 90° turned
248.1 0010 0001 0690	1,0 mm	40 mm	15 mm	10 mm	6,0 mm 90° turned



# CLIP HOOK EXAMPLES



## PIPE AND PROFILE HOOKS

» These spring steel hooks are especially developed for pipes, tubes or hollow products in general. The spring steel hook will be designed to your needs according to the diameter and weight of the goods you want to varnish. The advantage of the cranked hook is that since it sticks out in the middle of the pipe or profile it won't leave marks at the edges. The straight version is less expensive. To submit an offer to you we need the pipes or tubes inside diameters, the hook's length, the strength of the wire and the quantity that is needed.

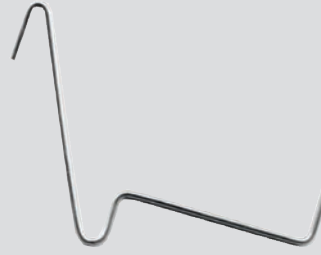


Part no.	type	dimension	quantity/box
251.10	straight, for inside Ø 10 mm	200 x 2,0	250
251.20	straight, for inside Ø 20 mm	200 x 2,0	250
251.30	straight, for inside Ø 30 mm	200 x 3,0	250
252.10	cracked, for inside Ø 10 mm	200 x 2,0	250
252.20	cracked, for inside Ø 20 mm	200 x 2,0	250
252.30	cracked, for inside Ø 30 mm	200 x 3,0	250

# HOOKS

## COMBI HOOKS

» Hooks to build a hanging system. To hang up products with disposable hooks on several levels beneath each other. The combi hooks can be hung up one by one in a 90° angle to each other. Each hook can carry items up to 200mm length. This hook makes a compressed suspension of parts possible without having to install a complex varnishing rack.



Part no.	measure in mm
250	70x2,0

## SPRING TUBE HOOKS

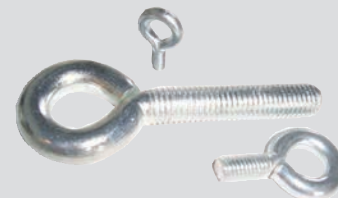
» Spring tube hooks are used for vertical (fig. A) or horizontal (fig. B) hanging up of pipes or profiles. For horizontal hanging one spring tube hook is put into each end of the tube or profile. The tubes or profiles can then be hung up with a C- or S-Hook one under the other instead of having to use a rack. To submit an offer we need to know the objects inner  $\varnothing$ , the wished leg length, the wire  $\varnothing$ , the inner  $\varnothing$  of the eye and the quantity.



Part no.	leg length mm	eye mm	$\varnothing$ mm	quantity/box
253.15	100	20	1,5	250
253.20	150	20	2,0	250
253.30	150	20	3,0	250

## THREAD HOLE HOOKS

» If a product needs to be hung up in a thread hole which has to be covered at the same time, a thread eye which is then hung up on a hook should be used. For better contact and to achieve a longer period of usage the contact point between the hook and the thread hole hook can be protected with a silicone rubber tube.



Part no.	thread size	length of thread mm	inner $\varnothing$ of eye in mm	quantity/box
MS 03	M3	10	5	500
MS 04	M4	10	6	400
MS 05	M5	10	8	200
MS 06	M6	10	10	100
MS 08	M8	15	12	100
MS 10	M10	20	14	100
MS 12	M12	60	18	25

# HOOKS

## SCREW CAPS

» A perfect combination of masking and hanging for thread plugs, screws, welded threads, etc. The screw caps with a squeezed end possess a hole to hang up hooks etc.



Part no.	thread size	Ø hole mm	quantity/box
MT 03	M3	3	500
MT 04	M4	3	400
MT 05	M5	4	200
MT 06	M6	5	100
MT 08	M8	6	50
MT 10	M10	8	25
MT 12	M12	10	25
MT 14	M14	12	25
MT 16	M16	14	25
MT 18	M18	16	25
MT 20	M20	18	25

## CROSSBAR SYSTEM 1000/1100

**SYSTEM 1000, LIGHT VERSION, 0,6 MM STEEL**

**SYSTEM 1100, MEDIUM VERSION 1,0 MM STEEL**

» The variation with tight edges and the weld seams pressed inwards has been constructed especially for small and medium-sized parts. The crossbar system 1000, made of 0,6mm thick metal, can be used for lightweight parts while the crossbar system 1100, made of 1,0 mm thick metal can be stressed twice as much. The U-profile functions as a Faraday cage. The crossbar systems are based on a unit assembly system and can be put together, perfectly fitting to your needs.

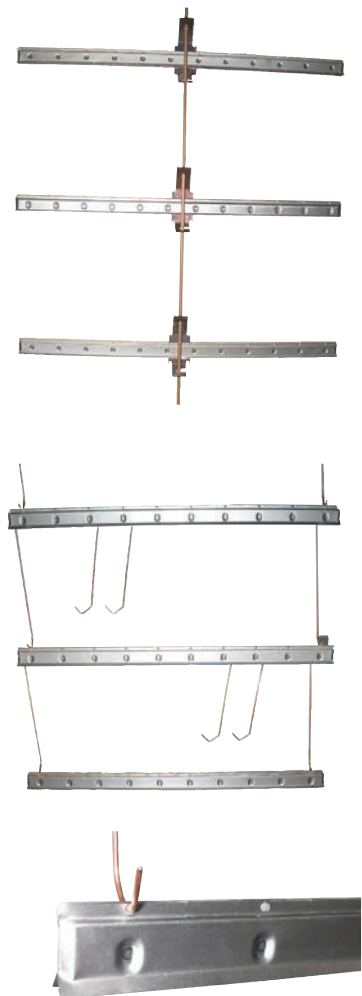
The hooks (up to Ø 2mm for system 1000 and up to Ø 4mm for system 1100) conduct the electric current for a very long period of time, because no powder coat or wet varnish penetrates inside the crossbar.

The crossbar systems 1000/1100 are available with different distances between its holes (distance in stock = 50mm). The U-profile is closed at the ends. Even after constant use the hooks can easily be changed.

For chain conveyer systems with vertical transport one hook of Ø 4, 6 or 8mm is welded onto the top crossbar of the system. The eye can be plain or turned 90°.

To design a hanging system with different levels usual C-hooks as well as our assembly clips can be used. The assembly clip is simply clipped onto the middle or the right and the left side of the crossbar system 1000/1100. They can then be connected in variable distances by a steel bar of Ø 6mm. Alternatively one can connect the crossbars with a flexible special frame (see hanging systems for small parts).

Bends caused by production may occur for crossbars up to a length of 1200 mm.



## CROSSBAR SYSTEM 1000

part no.	length mm	quantity/box
917.0500	500	100
917.0600	600	100
917.0800	800	100
917.1000	1000	100
917.1200	1200	100

## CROSSBAR SYSTEM 1100

part no.	length mm	quantity/box
917.-1-.0500	500	100
917.-1-.0600	600	100
917.-1-.0800	800	100
917.-1-.1000	1000	100
917.-1-.1200	1200	100

# HOOKS

## ASSEMBLY CLIPS

### FOR CROSSBAR SYSTEM 1000/1100 (PATENTED)

» This assembly clip helps to hold crossbars and assemble a hanging rack without the need of tools. They can be attached in the middle of the crossbar or at each crossbars end.



part no.	quantity/box
917.9	150

## SLOPE HOOKS

### FOR CROSSBAR SYSTEM 1000/1100/FLEX

» The following lengths are in stock. The article TV has a locking device. We can produce additional lengths with a short period of delivery.

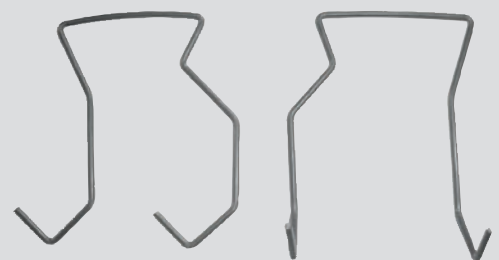


part no.
T 700 X 6,0
TV 700 X 6,0
T 1000 X 6,0
TV 1000 X 6,0
T 1300 X 6,0
TV 1300 X 6,0
T 1500 X 6,0
TV 1500 X 6,0
T 1800 X 6,0
TV 1800 X 6,0

## TWIN HOOK

### FOR CROSSBAR SYSTEM 1000/1100

» This angle connection metal helps you to easily build a flexible rack by putting several crossbars 1000/1100 together.



part no.	ty/box	wire Ø mm	material
HTW 50 X 1,5 PDV	1000	1,5	spring steel
HTW 50 X 1,5 90DV	1000	1,5	spring steel
HTW 50 X 2,0 PDV	500	2	spring steel
HTW 50 X 2,0 90DV	500	2	spring steel



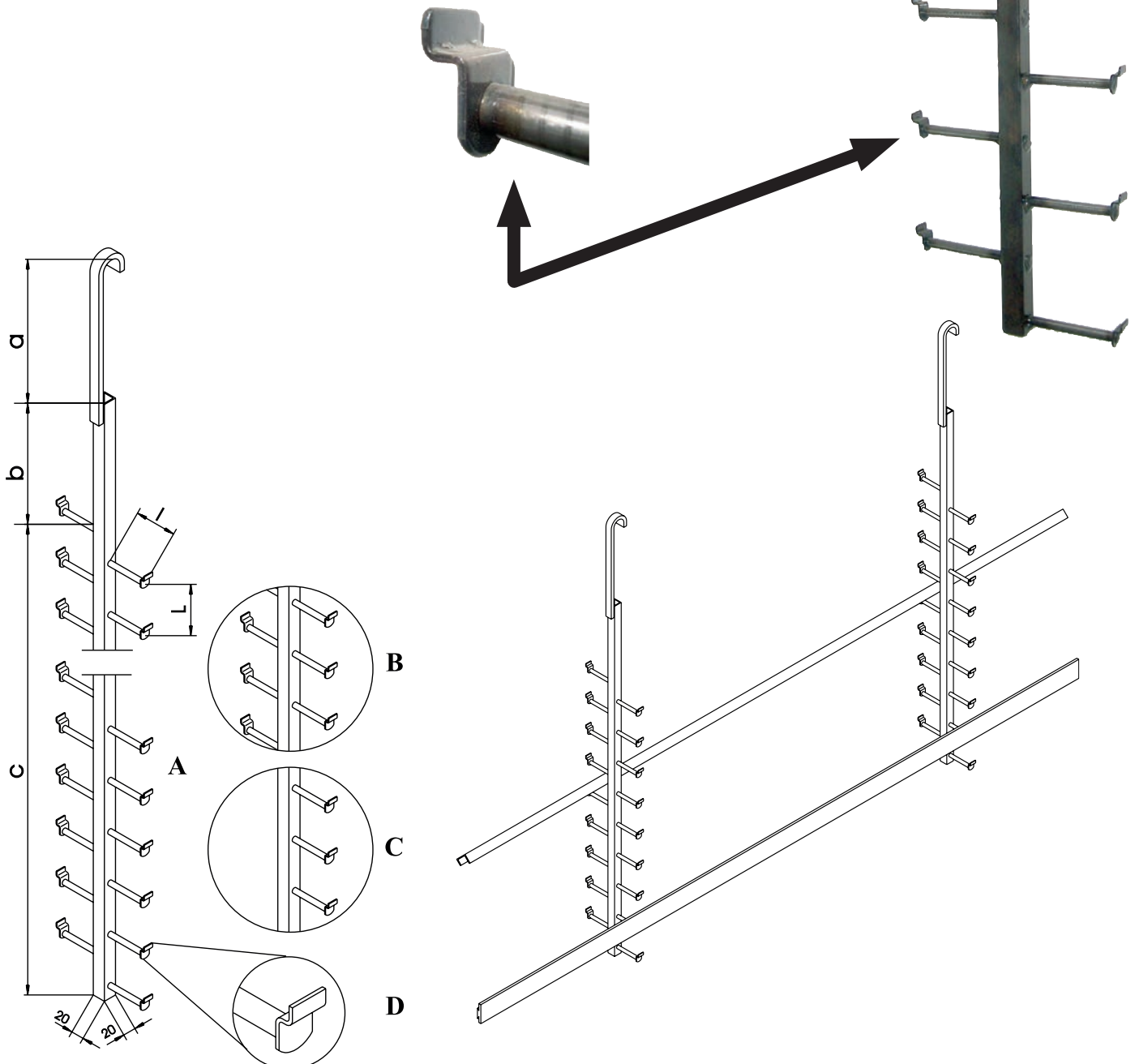
# PROFILE RACK SYSTEM

## PROFILE RACK SYSTEM (SYSTEM SCHÜCO)

» Originally developed to horizontally hang up window frames horizontally. But it is basically suitable to hold all kinds of profiles with a fold, a slot or something similar.

» The rods which are welded on the main body's arms are made of a 1 mm strong very tightly edged metal sheet (see detail D). The metal sheet is available in 10 and 20 mm strength. Thanks to the tight edging they are very robust while at the same time able to slip into tight profile openings.

» The distance between the hooks (L) and their lengths (l) are freely selectable.



# RACKS AND TROLLEYS



## PORTABLE WORK STAND

Feature:  
\* Great For Doors, Fenders, Hoods And Bumpers.

Description:  
\* Steel with galvanized  
\* Foldable size:1020\*1030mm  
\* Load Capacity: 500Lbs  
\* Leg Tube Length: 77cm  
\* Tubing size:28x1.2mm (DIA.xT)  
\* 1/2" EPE Foam Will Cover Whole Arm



## PORTABLE WINDSHIELD STAND

\* Steel with powder coated  
\* Tubing size: 25x1.5mm,(DIA.xT)  
\* Closed size: 1070x1000mm(W x H) - Height not include the holder and rubber cup.  
\* Max opening width is 470mm,the operation height is 750mm. (23 sections chain)



## PORTABLE WORK STAND

Feature:  
\* Great For Doors, Fenders, Hoods And Bumpers.

Description:  
\* Steel with galvanized  
\* Foldable size:1030\*1150mm  
\* Load Capacity: 500Lbs  
\* Leg Tube Length: 87cm  
\* Tubing size:28x1.2mm (DIA.xT)  
\* 1/2" EPE Foam Will Cover Whole Arm



## PORTABLE WORK STAND WITH CURVED LEG

Feature:  
\* Portable Work Stand, Angel Leg, Stable Construction  
\* Great For Doors, Fenders, Hoods And Bumpers.

Description:  
\* Steel with galvanized  
\* Load Capacity: 500Lbs  
\* Foldable size:1020 x 1050mm  
\* Tubing size:28x1.2mm (DIA.xT)  
\* 1/2" EPE Foam Will Cover Whole Arm



## HEAVY DUTY PORTABLE WORK STAND

Feature:  
\* Great for working on doors, fenders, hoods and bumpers

Description:  
\* Steel with galvanized  
\* Load Capacity: 500Lbs  
\* Foldable size:1040 x 1090mm  
\* Tubing size:32x1.2mm (DIA.xT)  
\* 1/2" PU Foam Will Cover Whole Arm



## HEAVY DUTY PORTABLE WORK STAND

\* Material:Steel with galvanized  
\* Load Capacity 600Lb  
\* Foldable size:1040\*1120mm  
\* Tubing size:32x1.2mm (DIA.xT)  
\* Outer Top Frame Tube Length: 104cm;  
\* Inner Top Frame Tube Length: 97cm;  
\* Leg Tube Length: 85cm/7cm  
\* Bottom Tube Length: 114cm  
\* 1/2" PU Foam Will Cover Whole Arm



## RUBBER CUP

\* Rubber Cup for glass stand  
\* Reach the PAHs



## WALL HOLDER FOR PAPER ROLLS

\* Steel with powder coated  
\* Size:783x245x455mm  
\* Capacity:30kg  
\* Iron tube:22mm(D)x1.2mm(T)  
\* Wall mounted strip iron:60mm(L)x30mm(W)x3mm(T)  
\* Frame strip iron:455mm(L)x25mm(W)x3mm(T)  
\* Size of screws for connecting wall-mounted strip iron with strip iron frame is 10mm



# RACKS AND TROLLEYS



## X-TRESTLE

### Feature:

- \* Ideal for storage of bumpers prior to preparation and spraying.
- \* Adjustable stand width with extendable arms makes this unit suitable for holding various types and styles of bumpers.
- \* Folds away for easy storage.
- \* K/D structure.
- \* With locking system on the axis for different positions

### Description:

- \* Steel with powder coated
- \* 2pcs "1" tube: F30\*1200\*1.2mm
- \* 4pcs Round tube with plastic tube sleeve: Ø38\*600\*1.2mm
- \* Folded size:600mm(L) x 1260 mm(H)



## PORTABLE WINDSHIELD STAND

### Feature:

- \* Work stand with soft rubber suction cup.
- \* Assembled construction

### Description:

- \* Steel with powder coated
- \* Tubing size:25x1.5mm (DIA.xT)
- \* Foldable size:1130 x 990mm
- \* The opening width when hang 2 sections chain(hook+chain): 285mm
- \* The max opening width when hang 9 sections chain(hook+chain): 610mm, the height including rubber cup at this status is 620mm.
- \* The height when hang 5 sections chain(hook+chain)including rubber cups: 775mm the width at this status is 445mm.
- \* The width between the bend leg one: 1130mm, leg two: 1100mm



## FOLDING WORK STAND

### Feature:

- \* Single chain height adjustment.
- \* Folds up for easy storage.

### Description:

- \* Steel with powder coated
- \* Color: orange(pantone 172c) or OEM color
- \* 2pcs "1" tube: F30\*1200\*1.2mm
- \* 4pcs Round tube with plastic tube sleeve: Ø38\*600\*1.2mm
- \* 2pcs x Steel chain + screw bolt: Ø6mm x 12pcs, Ø8mm
- \* Folded size:600mm(L) x 1260 mm(H)



## PORTABLE WORK STAND WITH SLING

### Feature:

- \* Portable Work Stand, Stable Construction,, With Sling can hold tools and parts

### Description:

- \* Steel with galvanized
- \* Load Capacity: 500Lbs
- \* Foldable size:1040 x 1090mm
- \* Tubing size:32x1.2mm (DIA.xT)
- \* 1/2" PU Foam Will Cover Whole Arm



## MOBILE X-STAND

### Feature:

- \* Steel with powder coated
- \* Color: orange(pantone 172c) or OEM color
- \* Folded size:600mm(L) x 1360 mm(H)
- \* 2pcs "1" tube: F30\*1200\*1.2mm
- \* 2pcs Round tube: Ø38\*600\*1.2mm
- \* 2pcs square tube:F30\*600\*1.2mm
- \* 2pcs x Steel chain + screw bolt: Ø6mm x 12pcs, Ø8mm
- \* EPE foam
- \* 4 x 4inch castors(Two Swivel With Brake)



## WHEEL STAND

- \* Wheel storage trolley for up to 4 wheels.
- \* Foldable space saving.
- \* Complete with metal tray for wheel nuts, tools etc.
- \* Solid steel construction.
- \* 6pcs castors, two with brakes.
- \* Weight: 10.48kg



## X-TRESTLE WITH BUMPER HOLDER

- \* Ideal for storage of bumpers prior to preparation and spraying.
- \* Adjustable stand width with extendable arms makes this unit suitable for holding various types and styles of bumpers.
- \* Folds away for easy storage.
- \* Material:iron with zinc plated
- \* 2pcs "1" tube: F30\*1200\*1.2mm + Ø38\*600\*1.2mm
- \* 2pcs x Adjustable panel: Ø25\*1.8mm, 120\*110\*2.5mm
- \* 2pcs x Extension Tube: Ø20\*770\*1.2mm, Ø22\*315\*1.2mm
- \* Not include 4pcs small masts



## ROTATING PAINT PANEL STAND

- \* The Universal Super Stand can handle any panel, fender, door, hood, or bumper to make repairs and refinishing easy.
- \* The Super Stand comes with 8 adjustable bars to fit almost any panel securely.
- \* The Super Stand's portability allows for fast and easy moving of the part from the prep station to the spray booth.
- \* The Super Stand's unique design allows for single handed rotation of panels 350 degrees in 16 degree increments
- \* Weight capacity: 200lbs
- \* With Operating Manual

# RACKS AND TROLLEYS



## ROTATING PAINT SPRAY STAND

### Feature:

- \* For Garage and body shop use
- \* Ideal for doors, bonnets, bumpers, wings and spoilers etc
- \* Adjustable and rotating bars make this stand suitable for almost any panel types.
- \* Portable for easy manoeuvring of application from preparation to spray booth
- \* With Operating Manual

### Description:

- \* Steel with galvanized
- \* Support size:2250\*950\*880mm
- \* Tubing size:F30\*1.5 + F20\*1.2mm
- \* Include:
  - 2 S hook,
  - 1 spray gun holder,
  - 4 vertical supports with fixed hook,
  - 2 vertical supports with longer removable hook,
  - 2 supports with holes
  - 2 x 8inch wheels



## HEAVY DUTY FOLDING BUMPER STAND

### Feature:

- \* Ideal for storage of bumpers prior to preparation and spraying.
- \* Adjustable stand width with extendable arms makes this unit suitable for holding various types and styles of bumpers.
- \* Folds away for easy storage.
- \* K/D structure.

### Description:

- \* Material: steel with powder coated
- \* 2pcs "1" tube: F30\*1200\*1.2mm
- \* 4pcs Round tube with plastic tube sleeve: Ø38\*600\*1.2mm
- \* 2pcs x Adjustable panel: Ø25\*1.8mm, 120\*110\*2.5mm
- \* 2pcs x Extension Tube: Ø20\*770\*1.2mm, Ø22\*315\*1.2mm
- \* 2pcs x Steel chain + screw bolt: Ø6mm x 12pcs, Ø8mm



## ROTATING PAINT PANEL STAND

### Feature:

- \* For Garage and body shop use
- \* Ideal for doors, bonnets, bumpers, wings and spoilers etc
- \* Adjustable and rotating bars make this stand suitable for almost any panel types.
- \* Portable for easy manoeuvring of application from preparation to spray booth
- \* With Operating Manual

### Description:

- \* Steel with galvanized
- \* Support size:2250\*950\*880mm
- \* Tubing size:F30\*1.5 + F20\*1.2mm
- \* Include:
  - 2 S hook,
  - 1 spray gun holder,
  - 4 vertical supports with fixed hook,
  - 2 supports with holes,
  - 2 x 8inch wheels,



## BONNET PANEL STAND

- \* Suitable for supporting many styles of car doors, hood, wings, fender, rear boot, bumper and tailgates.
- \* Each level can rotate 360° to suit.
- \* Fitted with two fixed wheels and two braked casters.
- \* Base Dimensions (W x D): 1110 x 780mm
- \* Maximum Arm Length: 1580mm
- \* Maximum Height: 1750mm



## WHEELMASTER PAINT STAND

### Feature:

- \* WheelMaster Paint Stand will take 4 x alloy wheels and enable the painter to rotate the wheels on the cones so the wheels can be painted completely without the need to lift and reposition the wheel.
- \* Supporting bars can be adjusted in height and the cones can be adjusted as well so the painter can work at the most comfortable position.

### Description:

- \* Steel with galvanized
- \* Load capacity:160kg(40kg per wheel rim holder)
- \* Size of base:1000mm x 750mm
- \* Size of support arms 1200mm
- \* Overall size: 1200mm x 1200mm x 1000mm high.
- \* Dia.: 200mm rubber wheels



## REVOLVING SPRAY STAND LACKIERSTÄNDER

- \* Wide wheel base provides stability and manoeuvrability
- \* Extension bar provides extra area for spraying large or additional parts
- \* Adjustable brackets provide multiple hold positions
- \* Easy to use foot operating locking system allowing positioning from horizontal to vertical
- \* include:
  - 2 S hook,
  - 1 spray gun holder,
  - 2 vertical supports with fixed hook,
  - 2 vertical supports with longer removable hook,
  - 2 supports with holes,
  - 6 steel holder frame,
  - 9 steel wingscrew(6+2+1),

# RACKS AND TROLLEYS



## T-BAR BUMPER STAND

- \* Material: steel with powder coated
- \* Base Size: 800\*460mm
- \* Height: 890-1250mm
- \* Bar: 1000-1700mm
- \* Tubing size: F30x1.2 + F25x1.2mm



## ADJUSTABLE PAINT HANGER

- \* Adjustable frame that extends from 127cm to 203cm
- \* 6 Hooks to hold parts for painting/drying
- \* 10cm PU caster wheels, 2 swivel, 2 swivel with brake
- \* Steel Tubing (F30/F25\*1.2mm), Powder Coated
- \* 150kg capacity total
- \* 50kg capacity per hook
- \* 177\*50cm wide



## LOCKING PLIER HOLDER PARTS HOLDER

- 1 set include: Locking Plier Holder with Buckle



## SMALL MASTS FOR X STAND

- \* Small Masts for X Stand
- \* 1 set include 4 pcs



## WHEEL RIM HOLDER FELGENSPITZ

- 1 set include: Wheel Rim Holder (felgenspitz) with buckle



## LOADED WORK STATION

- \* Mobile Trolley.
- \* Body Frame: 32X1.2Mm (Dia.Xt)
- \* Mesh Pan, Dia. 4Mm & 6Mm Steel Rod.
- \* 8" Solid Wheel And 4" Castor Wheel.
- \* Cart Size: 750Lx450Wx1000H



## TRIPLE MASKER MASKING MACHINE

- Feature:
- \* Wide base design for stability.
  - \* Holds 12", 24" & 36" rolls.
  - \* Non-skid rubber wheels for mobility.
  - \* Easy to load positive paper & tape alignment

- Description:
- \* Steel with powder coated
  - \* Size: 1530x1175x300mm
  - \* Tubing size: F25x1.2mm
  - \* 2 x 7inch PU wheels



## PREP STATION MASKING MACHINE

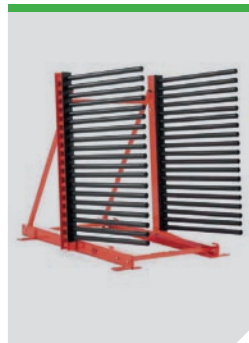
- \* Steel with powder coated
- \* Size: L1335 x W495 x H1270
- \* Capacity: 50kgs
- \* 2 x 8inch PU wheels



## WALL MOUNTING BUMPER STAND

- Feature:
- \* Holds Up To 4 Bumper Covers
  - \* Wall fixing

- Description:
- \* Steel with powder coated
  - \* H: 1500mm W: 1000mm D: 500mm
  - \* Include: 2Pcs
  - \* Net Weight: About 10.3Kg



## FREE STANDING WIND-SHIELD RACK

- \* Rack Size: 1000 L x 840 W x 1850mm H
- \* This rack holds 25 units windshield
- \* Steel masts with PU foam and end caps - welded in place
- 26 pair masts x 760mm long
- \* 22mm spacing between masts
- \* Center of mast to center of mast is 685mm
- \* Glass stops against 5 x 45mm neoprene rubber on the uprights
- \* Powder coated with Safety Red paint for high visibility and durability
- \* Rack base with 4 extra support foot
- \* Strong steel construction

# RACKS AND TROLLEYS



## 5-LITE TRUCK BED WINDSHIELD RACK

- \* Mountable On A Truck Bed.
- \* Rack Holds Up To 5 Windshields.
- \* Constructed Of Heavy Gauge Steel With Weather Resistant Black Powder Coat Finish.
- \* Masts Are 530Mm High, 32Mm/1.2Mm On Center Are Covered In Foam Padding
- \* To Minimize Damage Done To Windshields.
- \* Base Tube Size: 40\*40\*2Mm
- \* All Glass Contact Areas Have Rubber Pads To Help Prevent Breakage
- \* Every Post Is Topped With A Rubber Finger Lock To Prevent The Windshield From Slipping Out.



## 9-LITE TRUCK BED WINDSHIELD RACK

- \* Mountable On A Truck Bed.
- \* Rack Holds Up To 9 Windshields.
- \* Constructed Of Heavy Gauge Steel With Weather Resistant Black Powder Coat Finish.
- \* Masts Are 530Mm High, 32Mm/1.2Mm On Center Are Covered In Foam Padding To Minimize Damage Done To Windshields.
- \* Base Tube Size: 40\*40\*2Mm
- \* All Glass Contact Areas Have Rubber Pads To Help Prevent Breakage
- \* Every Post Is Topped With A Rubber Finger Lock To Prevent The Windshield From Slipping Out.



## 18" PORTABLE MASKER

- Feature:
- \* Accepts Rolls Up T 450mm(18") Wide
  - \* Light weight, Easy To Use And Mounted
  - \* Sharp, Anodized Blade For Smooth Cutting
  - \* Can Be Mounted On Wall

- Description:
- \* Steel with powder coated
  - \* Size: 56x28x47(mm)
  - \* Tubing size:  $\Phi 22 \times 1.0\text{mm}$
  - \* Thickness of Cutting Blade is 0.7mm with Spring.



## MOBILE MASKING PAPER STAND

- Feature:
- \* Durably constructed with heavy-duty steel
  - \* Includes handle and 6" tires for easy maneuvering
  - \* Includes 4 bars to hold 4 paper rolls and 4 tape rolls
  - \* 2 bars hold up to 12" paper & 2 bars hold up to 22" paper
  - \* Keeps tape and paper aligned without need of adjusting
  - \* Easy to load paper rolls and tape

- Description:
- \* Steel with powder coated
  - \* Size: 1130x520x800mm
  - \* Tubing size:  $F25 \times 1.2\text{mm} + \Phi 22 \times 1.2\text{mm}$
  - \* Thickness of Cutting Blade is 1.0mm with Spring.
  - \* 2 x 6inch wheels
  - \* With Operation Manual



## PREP STATION MASKING MACHINE

- Feature:
- \* Large Top Tray 22" X 46", Holds Tools & Tape
  - \* Holds 36" Plastic On Top Bar
  - \* Holds Up To 2 Rolls Of 18" Paper - Bar #2
  - \* Holds Up To 2 Rolls Of 18" Paper - Bar #3
  - \* Holds Up To 1 Roll Of 36" Paper - Bottom Paint Gun Holder

- Description:
- \* Steel with powder coated
  - \* 4 x 4inch PU wheels(Two Swivel With Brake)
  - \* With Operation Manual



## MULTI-ROLL MASKING MACHINE

- Feature:
- \* One Piece Cutting Bar And Dual Tape Rolls On All Dispensers
  - \* Tool-Less Paper Loading
  - \* Narrow 22" Profile Rolls Between Cars In Shop
  - \* Large Knobs Can Be Removed And Re-Installed By Hand
  - \* Masker Holds 2 Rolls Of 18" Paper And 2 Rolls Of 12" Paper Or Smaller
  - \* It'S Narrow Design Allows It To Be An Ease Moving Through The Shop
  - \* Also No Tools Necessary To Load Paper

- Description:
- \* Steel with powder coated
  - \* Size: 1080x560x580mm
  - \* Tubing size:  $\Phi 25 \times 1.2\text{mm} + \Phi 22 \times 1.2\text{mm}$
  - \* 2 x 6inch wheels



## 18" DOUBLE MOBILE MASKING MACHINE

- Feature:
- \* Portable Masker Holds Up To An 18" Roll Of Paper On Each Of Two Bars
  - \* One Piece Cutting Bar And Dual Tape Rolls On All Dispensers
  - \* Large Tray On Top And Smaller Tray On Side Hold Tools And Tape
  - \* Tool-Less Paper Loading.
  - \* No Tools Necessary To Load Paper
  - \* Large Knobs Can Be Removed And Re-Installed By Hand.
  - \* Paper Loading Is Quick And Easy
  - \* With Operation Manual

- Description:
- \* Steel with powder coated
  - \* Size: 950x700x650mm
  - \* Tubing size:  $\Phi 25 \times 1.2\text{mm} + \Phi 22 \times 1.2\text{mm}$
  - \* 2 x 8inch wheels



# TAPE DISPENSERS



## PVETD-003

Feature:  
Available tape width: 7-50mm Tape length set limit: 20-999mm Display: 3 digit LEDDimensions: 137W x 218D x 150H(mm) Weight: 2.4kg



## PVETD-004

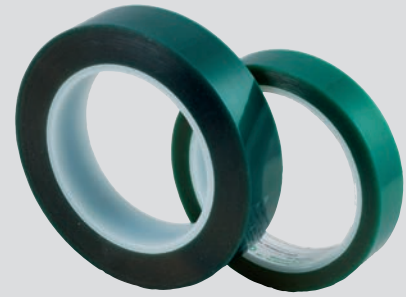
Automatic tape dispenser Available tape width: 3-25mm Tape length set limit: 15-70mm Max. OD of Roll: 150mm Dimensions: 126W x 258D x 150H(mm) Weight: 2.0kg



# POLYESTER TAPE FOR MASKING

## FEATURE

- » Excellent thermal, abrasion and chemical resistance
- » High temperature resistance up to 200 degrees celsius
- » Insulation 3kv
- » Removes cleanly from surfaces without residue
- » Available width from 5mm up to 1000mm



## APPLICATION

- » Masking for powder coating, electroplating or during other high temperature painting
- » Flash-breaker tape when pulling through cured coating such as epoxies
- » Holding parts or sealing vacuum bags during processing

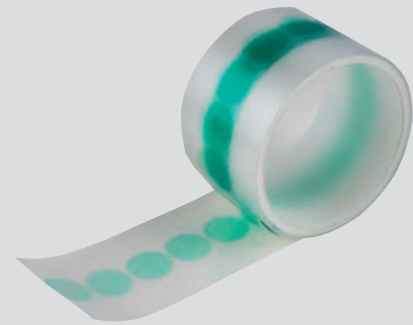
ITEM	Size	Unit
500081066	0,08mmx10mmx66m	roll
500081966	0,08mmx19mmx66m	roll
500082066	0,08mmx20mmx66m	roll
500082566	0,08mmx25mmx66m	roll
500083066	0,08mmx30mmx66m	roll
500083566	0,08mmx35mmx66m	roll
500084066	0,08mmx40mmx66m	roll
500085066	0,08mmx50mmx66m	roll
500088566	0,08mmx85mmx66m	roll
50008101-666	0,08mmx101,6mmx66m	roll

## STORAGE

- » Store at room condition. Avoid direct sunlight. Valid for 12 months

## POLYESTER TAPE DISKS

- » Excellent thermal, abrasion and chemical resistance
- » Different shapes available
- » Removes cleanly from surfaces without residue
- » Available diameter from 5mm up to 1000mm



## APPLICATION

- » Masking for powder coating, electroplating or during other high temperature painting

## STORAGE

- » Store at room condition. Avoid direct sunlight. Valid for 12 months

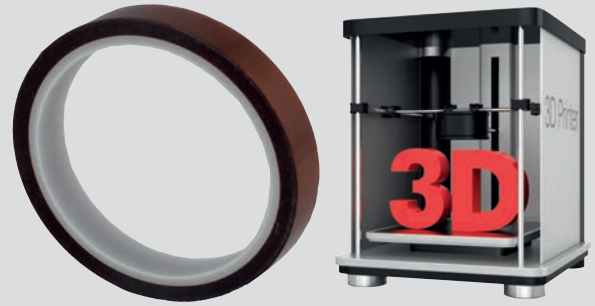
ITEM	Size	Unit
500080001	20mm-(1000pcs/roll)	roll
500080002	30mm-(500pcs/roll)	roll
500080003	125mm-(100pcs/roll)	roll
500080004	10mm-(2000pcs/roll)	roll
500080005	19mm-(1000pcs/roll)	roll
500080006	22mm-(1000pcs/roll)	roll
500080007	21mm-(1000pcs/roll)	roll
500080008	16mm-(1000pcs/roll)	roll
500080009	25mm-(500pcs/roll)	roll
500080010	50mm-(250pcs/roll)	roll



# POLYIMIDE TAPE

## FEATURE

- » Excellent thermal, abrasion and chemical resistance
- » High temperature resistance up to 260 degrees celsius
- » Insulation 3kv
- » Removes cleanly from surfaces without residue
- » Available width from 5mm up to 1000mm



## APPLICATION

- » Masking for powder coating, electroplating or during other high temperature painting
- » Flash-breaker tape when pulling through cured coating such as epoxies
- » Holding parts or sealing vacuum bags during processing
- » Widely used in 3D printing process

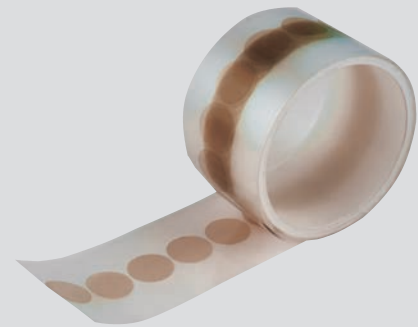
## STORAGE

- » Store at room condition. Avoid direct sunlight. Valid for 12 months

ITEM	Size	Unit
500081033	0,08mmx10mmx33m	roll
500081933	0,08mmx19mmx33m	roll
500082033	0,08mmx20mmx33m	roll
500082533	0,08mmx25mmx33m	roll
500083033	0,08mmx30mmx33m	roll
500083533	0,08mmx35mmx33m	roll
500084033	0,08mmx40mmx33m	roll
500085033	0,08mmx50mmx33m	roll
500088533	0,08mmx85mmx33m	roll
5000810033	0,08mmx100mmx33m	roll

## POLYIMIDE TAPE DISCS

- » Excellent thermal, abrasion and chemical resistance
- » High temperature resistance up to 260 degrees celsius



## APPLICATION

- » Masking for powder coating, electroplating or during other high temperature painting

## STORAGE

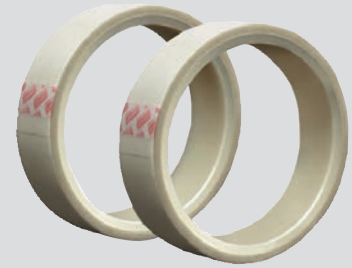
- » Store at room condition. Avoid direct sunlight. Valid for 12 months

ITEM	Disc diameter	Unit
500080011	20mm	roll
500080012	30mm	roll
500080013	12mm	roll
500080014	10mm	roll
500080015	19mm	roll
500080016	22mm	roll
500080017	24mm	roll
500080018	36mm	roll
500080019	25mm	roll
500080020	50mm	roll

# TAPES

## FEATURE

- » Soft tear-resistant, strong bond, not easily deformed
- » High temperature resistance up to 260 degrees celsius



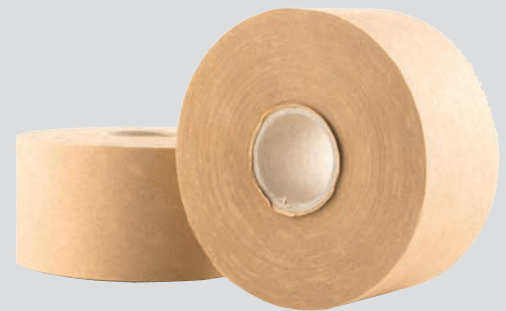
## APPLICATION

- » Masking for powder coating, electroplating or during other high temperature painting
- » Masking during sandblasting
- » Insulating electric and induction type furnace power supply leads
- » Securing high temperature, non\_PSA insulation high temperature areas
- » Reinforcing and repairing on mining machines
- » Reinforcing insulation in electrical installations where heavy loads cause high heat and breakdown of original insulation

ITEM	Size	Unit
500182530	0,18mmx25mmx30m	roll
500185030	0,18mmx50mmx30m	roll

## FEATURE

- » Masking for wet coating
- » Paper
- » High temperature resistance



## APPLICATION

- » Masking for wet coating, electroplating or during other high temperature painting

ITEM	Size	Unit
9174000130	0,3X250M (1m)	roll
917400017	0,6X250M (1m)	roll
917400100	1,3x250M (1m)	roll

## STORAGE

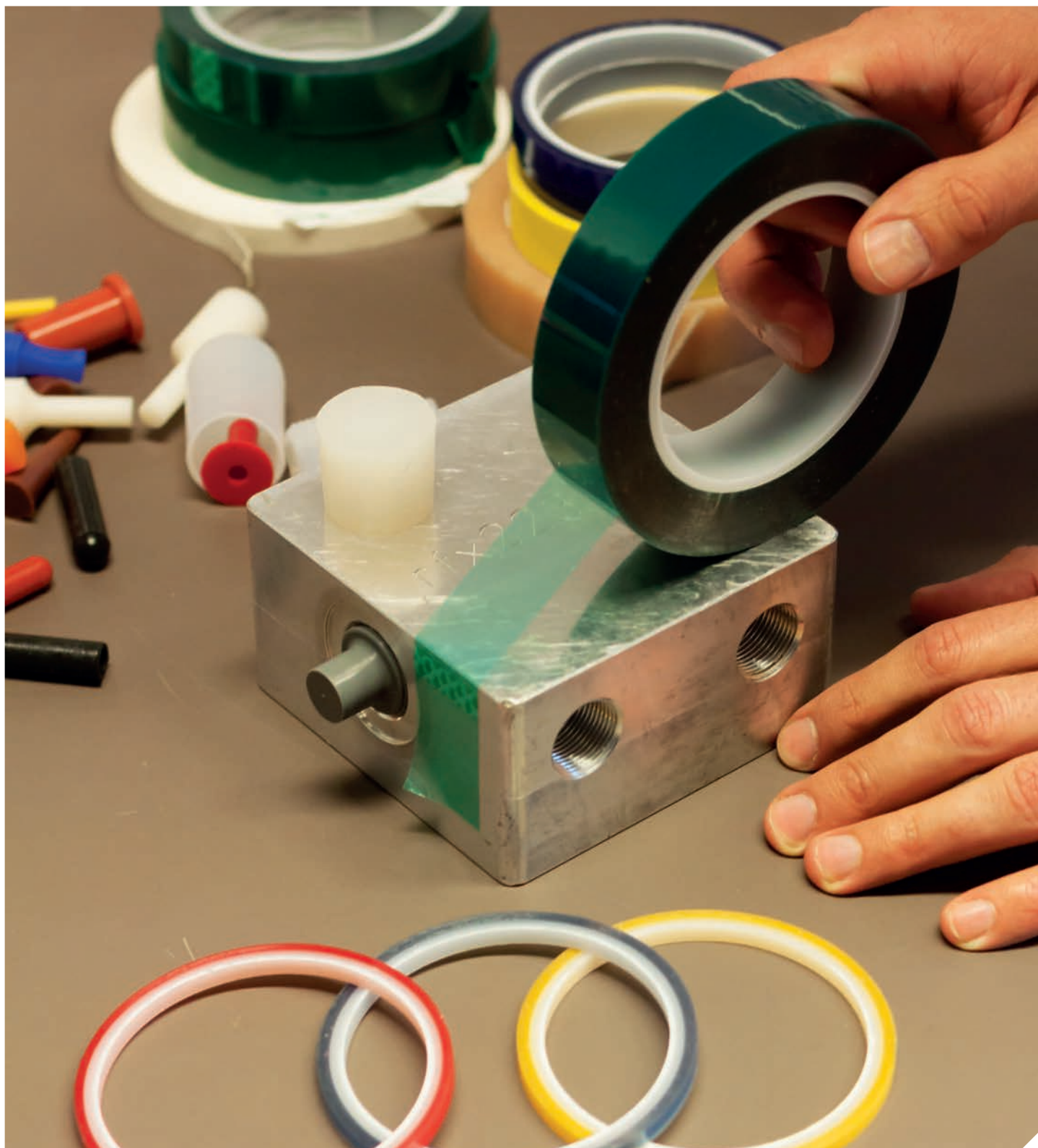
- » Store at room condition.

# CAPS AND PLUGS

High Temperature Resistance Silicone Masking

» Heatproof silicone thread protectors are available in a wide variety from the Tallinn warehouse. They are suitable for protecting threads and openings during powder coating, cathoporesis, shot peening, and wet coating.

» Using silicone thread protectors is a sustainable and efficient solution when it comes to masking openings and threads.



# CAPS AND PLUGS

High Temperature Resistance Silicone Masking

## FEATURE

- » Excellent thermal, abrasion and chemical resistance
- » High temperature resistance up to 315 degrees celsius
- » Different models and sizes available



28

### CONICAL WASHER PLUGS (SPLP)

Silicone rubber plugs for holes are good solution where the surface surrounding the hole is to be masked, or for ensuring that the entrance thread remains powder-free. The plug consists of two different cones and a washer-shaped centre insert.



29-30

### SILICONE CAPS (SCP)

Protector caps for bolts, temp up to 315°



31

### CONICAL FLANGE PLUGS (CCP)

Could be used as a plug to cover the hole, and also could be used as a cap to protect the axle. Temp up to 315°



31

### CONICAL PLUGS WITH HANDLES (CSP)

Conical plugs with small handles will help you easy to be catch the plugs and pull it from the holes after worked. Silicone temp up to 315°



31

### WASHER CAPS (DZP)

Can be used for masking a flat surface while at the same time masking a welded bolts, for instance, it can also be used for masking holes.



32

### FLAT CAPS (CFP)

Protector caps for bolts, temp up to 315°



32

### MOUSE TAPS (CFP)

Thin silicone rubber strips to facilitate masking of small holes. Silicone temp up to 315°



33

### FLANGELESS PLUGS (CTRP)

This plug has soft ribs which give effective masking to threaded holes. This type of plug also minimize the risk of unwanted paint ridges at the thread entrance.



33

### CONICAL PLUGS (NAP)

To close holes. Silicone temp up to 315°

# CAPS AND PLUGS

High Temperature Resistance Silicone Masking

## APPLICATION

- » Masking for powder coating, electroplating or during other high temperature painting
- » Masking during mediablasting / sandblasting



**33**

**HOLLOW TAPED PLUGS WITH HANDLE (SSP)**

Tapered design to fit a variety of hole diameters handles easy to be catch in the work processing.



**35-36**

**SILICONE PULL PLUGS (BOP)**


Industry standard solution for threaded and non-threaded through-holes in powder coating and e-coating applications.



**33**

**HOLLOW CONICAL STOPPERS (TRSP)**

Traditional conical plug are available with a hollow interior as per the diagram, save material and keep the price low. The holes are designed to fit to several threaded stopper can therefore be used both as inner and outer masking. Silicone temp up to 315°.



**36**

**METRIC CYLINDRICAL PULL PLUGS (BSP)**


The edge on the larger diameter works as a mask stop or masking of entrance thread. This pull plug is designed for metric threads.



**37**

**BLIND-HOLE THREAD MASK PLUGS (SP)**

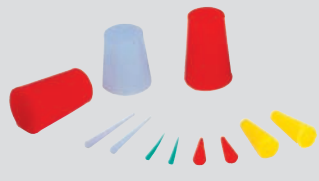
Shallow Design is Ideal for Blind Hole Applications.



**37**

**FLAT-CONNECTION CAPS (CP)**

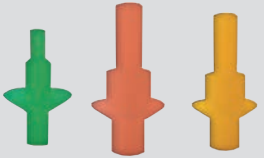
Silicone flat-connection caps for electric connections. With high-temperature up to 315°



**38-39**

**CONICAL PLUGS (TRP)**

To close holes



**39**

**WASHER PULL PLUGS (PWP)**

Conical plugs, up to 315°C, to close holes



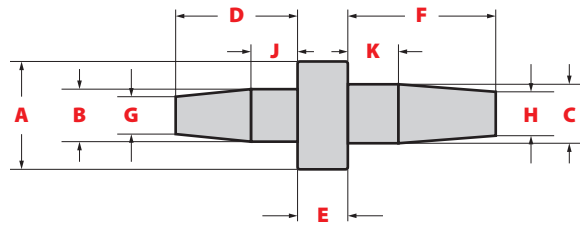
**40**

**EASY USE CAPSULE (YZP)**

Caps are ideal for large diameter or long length products.



# CONICAL WASHER PLUGS



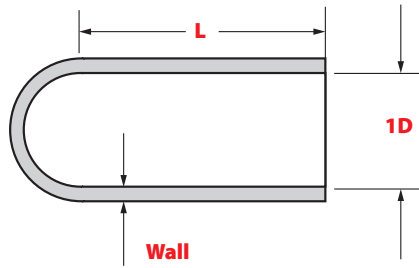
## CONICAL WASHER PLUGS

Silicone rubber plugs for holes where the surface surrounding the hole is to be masked, or for ensuring that the entrance thread remains powder-free. The plug consists of two different cones and a washer-shaped centre insert.

PART NO.	A	B	C	D	E	F	G	H	J	K	PCS/bag
	mm	mm	mm	mm	mm	mm	mm	mm	mm	mm	
SPLP-103	6,4	2,6	3,3	5,8	5	7,2	1,4	1,8	2	2	1000
SPLP- M3	7	2,8	3,7	5,8	5	7,4	1,4	1,9	2	2	1000
SPLP-130	12,7	3,3	5,3	7,5	5	10	2	3	2,5	3	500
SPLP-130-250-200	6,4	3,3	5,1	12,7	5	12,7	1,6	3,3	5	5	1000
SPLP-130-312-180	7,9	3,3	4,6	12,7	5	12,7	1,6	2,5	3	3,8	1000
SPLP-130-375-140	9,5	3,3	3,6	12,7	5	12,7	1,8	2	3	3	1000
SPLP-130-500-375	12,7	3,3	9,5	12,7	4,8	12,7	1,6	7,2	4,6	4,6	500
SPLP-140-500-180	12,7	3,6	4,6	12,7	4,8	12,7	2	2,5	3,8	3,8	500
SPLP-142	7,9	3,6	4,6	12,7	5	12,7	2,3	3	2,5	2,5	1000
SPLP-142-250-180	6,4	3,6	4,6	12,7	4,8	12,7	2,3	3	2,5	2,5	1000
SPLP- M4	9	3,6	4,7	7,2	5	9,4	1,8	2,4	2	2,4	1000
SPLP-155-250-200	6,4	3,9	5,1	12,7	4	12,7	1,8	2,6	3,5	3,5	1000
SPLP-155-312-238	7,9	3,9	6,1	12,7	5	12,7	1,6	3,7	5	5	1000
SPLP-155-375-238	9,5	3,9	6	12,7	4,8	12,7	1,6	3,7	5	5	500
SPLP- M5	9,5	4,5	5,7	9	5	11,4	2,3	2,8	2,3	2,8	1000
SPLP-180-250-180	6,4	4,6	4,6	12,7	4,8	12,7	2,5	2,5	3,8	3,8	1000
SPLP-180-250-238	6,4	4,6	6,1	12,7	5	12,7	2,3	3,7	3,5	3,5	1000
SPLP-180-275-200	7	4,6	5,1	12,7	4,8	12,7	2,5	2,8	2,5	3	1000
SPLP-180-350-225	8,9	4,6	5,7	12,7	4,8	12,7	2,5	3	2,5	3	500
SPLP-180-375-250	9,5	4,6	6,4	12,7	4,8	12,7	2,8	4	3,8	3,8	500
SPLP-180-500-200	12,7	4,6	5,1	12,7	4,8	12,7	2,5	3	2,5	3	500
SPLP-200-312	7,9	5,1	6	12,7	5	12,7	3	3,5	2,5	3	500
SPLP-200-500-238	12,7	5,1	6,1	13,3	4,8	13,3	4,1	4,6	3,2	3,2	250
SPLP-200	9,5	5,1	7	10,6	5	13,4	2,5	3,5	2,6	3,4	250
SPLP-209-375-275	9,5	5,3	7	12,7	5	12,7	3,5	4,5	3	3	250
SPLP- M6	12,5	5,3	6,7	10,6	5	13,4	2,6	3,4	2,6	3,4	250
SPLP-250-375-250	9,5	6,4	6,4	12,7	5	12,7	3,8	3,8	5	5	250
SPLP-265-1180-765	30	6,7	19,4	12,7	5	12,7	4	15,5	3,5	5	50
SPLP-275	9,5	7	9,5	12,7	0	17,8	4,4	7	3,2	4,7	250
SPLP-275-312-200	7,9	7	5,1	12,7	5	12,4	3,8	3,8	5	5	250
SPLP-275-500-375	12,7	7	9,5	12,7	5,1	12,7	5,7	7,2	5,1	5,1	250
SPLP- M8	17	7,1	8,7	14,2	5	17,4	3,6	4,3	3,6	4,3	250
SPLP-331	20	8,4	8,4	12,7	5	12,7	5	5	4,2	4,2	100
SPLP-346	15,9	8,8	10,5	12,7	5	12,7	7,3	8,9	4,5	4,5	100
SPLP-375-500-455	12,7	9,5	11,6	12,7	5	12,7	7,2	9,9	5	5	100
SPLP-375-787-512	20	9,5	13	12,7	5	12,7	7,2	10	5	5	100
SPLP-375-1100-455	27,9	9,5	11,6	12,7	5	12,7	7,2	9,9	4,5	5	100
SPLP- M10	21	9,6	10,7	19,2	5	21,4	4,8	5,4	4,8	5,4	100
SPLP- M12	24	10,9	12,7	21,8	5	25,4	5,5	6,4	5,5	6,4	100
SPLP-551	20	14	17,5	12,7	5	12,7	11,5	14	3,5	3,5	100



# SILICONE CAPS



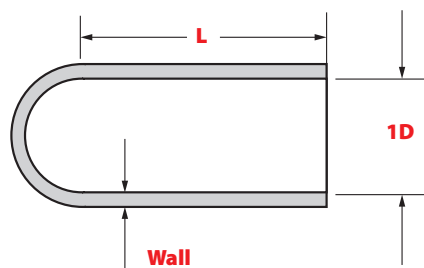
## SILICONE CAPS

Protector caps for bolts, temp up to 315°, closed on one side, easy to clean

PART NO.	ID mm	L mm	Wall mm	pcs/bag
SCP-20-500	0,51	12,7	1,52	1000
SCP-35-500	0,89	12,7	1,27	1000
SCP-40-500	1,02	12,7	1,15	1000
SCP-40-750	1,02	19,05	1,15	1000
SCP-62-500	1,57	12,7	1,15	1000
SCP-62-750	1,57	19,05	1,12	1000
SCP-62-1000	1,57	25,4	1,35	1000
SCP-70-1000	1,78	25,4	1,15	1000
SCP-80-750	2,03	19,05	1,52	1000
SCP-93-500	2,36	12,7	1,3	1000
SCP-93-750	2,36	19,05	1,52	1000
SCP-93-1000	2,36	25,4	1,52	1000
SCP-100-500	2,54	12,7	1,52	1000
SCP-100-1000	2,54	25,4	1,52	1000
SCP-109-500	2,77	12,7	1,52	1000
SCP-109-750	2,77	19,05	1,52	1000
SCP-109-1000	2,77	25,4	1,52	1000
SCP-120-250	3,05	6,35	1,27	1000
SCP-120-400	3,05	10,16	1,27	1000
SCP-125-500	3,18	12,7	1,52	1000
SCP-125-750	3,18	19,05	1,52	1000
SCP-125-1000	3,18	25,4	1,52	1000
SCP-125-1500	3,18	38,1	1,52	1000
SCP-135-625	3,43	15,88	1,52	1000
SCP-137-500	3,48	12,7	1,52	1000
SCP-137-1000	3,48	25,4	1,52	1000
SCP-140-500	3,56	12,7	1,52	1000
SCP-140-1000	3,56	25,4	1,52	1000
SCP-140-1500	3,56	38,1	1,52	1000
SCP-148-500	3,76	12,7	1,52	1000
SCP-148-750	3,76	19,05	1,52	1000
SCP-148-1000	3,76	25,4	1,52	1000
SCP-156-500	3,96	12,7	1,52	1000
SCP-156-1000	3,96	25,4	1,52	1000
SCP-156-1250	3,96	31,75	1,52	1000
SCP-156-1500	3,96	38,1	1,52	1000
SCP-165-1000	4,19	25,4	1,52	1000
SCP-165-1500	4,19	38,1	1,52	1000
SCP-172-500	4,37	12,7	1,52	1000
SCP-172-1000	4,37	25,4	1,52	1000

PART NO.	ID mm	L mm	Wall mm	pcs/bag
SCP-172-1500	4,37	38,1	1,52	1000
SCP-180-1000	4,57	25,4	1,52	1000
SCP-187-500	4,75	12,7	1,52	1000
SCP-187-750	4,75	19,05	1,52	1000
SCP-187-1000	4,75	25,4	1,52	1000
SCP-187-1500	4,75	38,1	1,52	1000
SCP-197-500	5	12,7	1,52	1000
SCP-197-1000	5	25,4	1,52	1000
SCP-218-1000	5,54	25,4	1,52	1000
SCP-223-500	5,66	12,7	1,52	1000
SCP-223-750	5,66	19,05	1,52	1000
SCP-223-1000	5,66	25,4	1,52	1000
SCP-223-1500	5,66	38,1	1,52	1000
SCP-223-2165	5,66	54,99	1,52	1000
SCP-234-500	5,94	12,7	1,52	1000
SCP-234-787	5,94	19,99	1,52	1000
SCP-234-1000	5,94	25,4	1,52	1000
SCP-234-1250	5,94	31,75	1,52	1000
SCP-234-1500	5,94	38,1	1,52	1000
SCP-250-500	6,35	12,7	1,52	1000
SCP-250-1000	6,35	25,4	1,52	1000
SCP-250-1500	6,35	38,1	1,52	1000
SCP-260-500	6,6	12,7	1,52	1000
SCP-260-1000	6,6	25,4	1,52	500
SCP-281-500	7,14	12,7	1,52	500
SCP-281-750	7,14	19,05	1,52	500
SCP-281-1000	7,14	25,4	1,52	500
SCP-281-2000	7,14	50,8	1,52	500
SCP-295-500	7,49	12,7	1,52	500
SCP-295-750	7,49	19,05	1,52	500
SCP-295-1000	7,49	25,4	1,52	500
SCP-295-1500	7,49	38,1	1,52	500
SCP-303-1000	7,7	25,4	1,65	500
SCP-312-500	7,92	12,7	1,52	500
SCP-312-1000	7,92	25,4	1,52	500
SCP-312-1500	7,92	38,1	1,52	500
SCP-340-1000	8,64	25,4	1,52	500
SCP-340-1500	8,64	38,1	1,52	500
SCP-340-2000	8,64	50,8	1,52	500
SCP-355-1000	9,02	25,4	1,52	500

# SILICONE CAPS



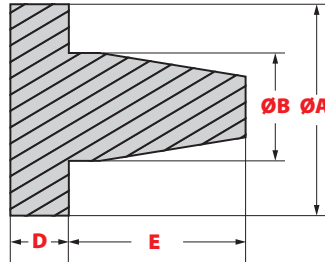
## SILICONE CAPS

Protector caps for bolts, temp up to 315°, closed on one side, easy to clean

PART NO.	ID mm	L mm	Wall mm	pcs/bag
SCP-355-1500	9,02	38,1	1,52	500
SCP-366-1000	9,3	25,4	1,52	500
SCP-366-1500	9,3	38,1	1,52	500
SCP-375-500	9,53	12,7	1,52	500
SCP-375-750	9,53	19,05	1,52	500
SCP-375-1000	9,53	25,4	1,52	500
SCP-375-1500	9,53	38,1	1,52	500
SCP-375-1969	9,53	50,01	1,52	250
SCP-406-1000	10,31	25,4	1,52	250
SCP-406-1500	10,31	38,1	1,52	250
SCP-437-1000	11,1	25,4	1,52	250
SCP-437-2000	11,1	50,8	1,52	250
SCP-456-500	11,58	12,7	1,52	250
SCP-456-750	11,58	19,05	1,52	250
SCP-456-1000	11,58	25,4	1,52	250
SCP-456-1500	11,58	38,1	1,52	250
SCP-456-1969	11,58	50,01	1,52	250
SCP-468-1000	11,89	25,4	1,52	250
SCP-468-1500	11,89	38,1	1,52	250
SCP-475-4000	12,07	101,6	1,52	250
SCP-480-1000	12,19	25,4	1,52	250
SCP-480-1500	12,19	38,1	1,52	250
SCP-500-750	12,7	19,05	1,52	250
SCP-500-1500	12,7	38,1	1,52	250
SCP-500-3000	12,7	76,2	1,52	250
SCP-500-4000	12,7	101,6	1,52	250
SCP-535-750	13,59	19,05	1,52	250
SCP-535-1000	13,59	25,4	1,52	250
SCP-535-1500	13,59	38,1	1,52	250
SCP-535-3000	13,59	76,2	1,52	250
SCP-562-659	14,27	16,74	1,52	250
SCP-562-800	14,27	20,32	1,52	250
SCP-562-1100	14,27	27,94	1,52	250
SCP-562-1500	14,27	38,1	1,52	250
SCP-600-1500	15,24	38,1	1,52	250
SCP-625-1125	15,88	28,58	1,52	250
SCP-625-1500	15,88	38,1	1,52	250
SCP-625-2500	15,88	63,5	1,52	250
SCP-687-625	17,45	15,88	1,52	250
SCP-687-1000	17,45	25,4	1,52	100
SCP-687-1250	17,45	31,75	1,52	100

PART NO.	ID mm	L mm	Wall mm	pcs/bag
SCP-687-1500	17,45	38,1	1,52	100
SCP-687-2500	17,45	63,5	1,52	100
SCP-730-1500	18,54	38,1	1,52	100
SCP-750-1500	19,05	38,1	1,52	100
SCP-750-1750	19,05	44,45	1,52	100
SCP-750-2000	19,05	50,8	1,52	100
SCP-750-3500	19,05	88,9	1,52	100
SCP-780-1500	19,81	38,1	1,52	100
SCP-812-1000	20,62	25,4	1,52	100
SCP-812-1500	20,62	38,1	1,52	100
SCP-845-2844	21,46	72,24	1,52	100
SCP-875-1000	22,23	25,4	1,52	100
SCP-875-1500	22,23	38,1	1,52	100
SCP-937-1500	23,8	38,1	1,52	100
SCP-970-1500	24,64	38,1	1,52	100
SCP-970-4000	24,64	101,6	1,52	100
SCP-1000-820	25,4	20,83	1,52	100
SCP-1000-1500	25,4	38,1	1,52	100
SCP-1000-2000	25,4	50,8	1,52	100
SCP-1062-1500	26,97	38,1	1,52	100
SCP-1062-2000	26,97	50,8	1,52	100
SCP-1062-3414	26,97	86,72	1,52	100
SCP-1125-1500	28,58	38,1	1,52	100
SCP-1187-1500	30,15	38,1	1,52	100
SCP-1250-1125	31,75	28,58	1,52	100
SCP-1250-1500	31,75	38,1	1,52	100
SCP-1350-1500	34,29	38,1	1,52	100
SCP-1350-1750	34,29	44,45	1,52	100
SCP-1375-1500	34,93	38,1	1,52	50
SCP-1380-1000	35,05	25,4	1,52	50
SCP-1380-1500	35,05	38,1	1,52	50
SCP-1500-1000	38,1	25,4	1,52	50
SCP-1500-1500	38,1	38,1	1,52	50
SCP-1500-1750	38,1	44,45	1,52	50
SCP-1625-2000	41,28	50,8	1,52	50
SCP-1750-1500	44,45	38,1	1,52	50
SCP-1750-2000	44,45	50,8	1,52	50
SCP-1875-1500	47,63	38,1	1,52	50
SCP-1875-2000	47,63	50,8	1,52	50
SCP-2000-2000	50,8	50,8	1,52	25
SCP-2105-2000	53,47	50,8	1,52	25

# CAPS AND PLUGS

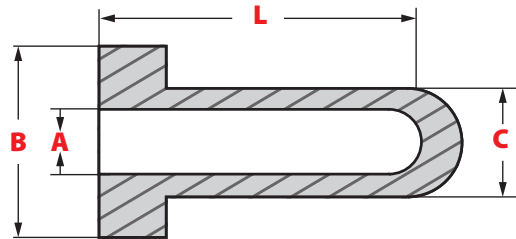


## CONICAL PLUGS

Up to 315°C, to close holes.

PART NO	A	B	D	E	PCS/bag
NAP-M4	8	5	8	14	500
NAP-M5	8.99	5.99	8.99	16.03	500
NAP-244	8.89	6.2	5	12.7	500

PART NO	A	B	D	E	PCS/bag
NAP-M6	10.16	6.43	10.16	17.63	500
NAP-M8	12.42	8.23	9.75	17.32	500

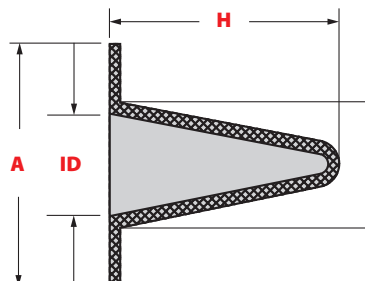


## WASHER CAPS

Can be used for masking a flat surface while at the same time masking a welded bolt, for instance, it can also be used for masking holes.

PART NO.	A	B	C	L	PCS/bag
DZP-100-500	2.54	12.7	5.72	25.4	500
DZP-106-472	2.69	11.99	6.2	25.4	500
DZP-125-500	3.18	12.7	6.4	25.4	500
DZP-140-500	3.56	12.7	8.2	25.4	500
DZP-146-472	3.71	11.99	6.6	25.4	500
DZP-156-500	3.96	12.7	8	25.4	500
DZP-172-500	4.37	12.7	9.7	25.4	500
DZP-180-600	4.57	15.24	8	25.4	500
DZP-220-590	5.59	14.99	9.09	25.4	500
DZP-220-787	5.59	19.99	8.71	25.4	500
DZP-240-500	6.1	12.7	9.09	25.4	250

PART NO.	A	B	C	L	PCS/bag
DZP-295-500	7.49	12.7	10.49	25.4	250
DZP-295-700	7.49	17.78	10.49	25.4	250
DZP-295-1000	7.49	25.4	10.49	25.4	250
DZP-300-675	7.62	17.15	10.59	25.4	250
DZP-375-825	9.53	20.96	13	38.1	250
DZP-453-984	11.51	24.99	16.51	38.1	250
DZP-460-700	11.68	17.78	14.5	25.4	250
DZP-500-1000	12.7	25.4	15.39	25.4	250
DZP-615-1180	15.62	29.97	20.7	38.1	250
DZP-750-1250	19.05	31.75	22.1	38.1	250
DZP-780-1475	19.81	37.47	24.69	25.4	250



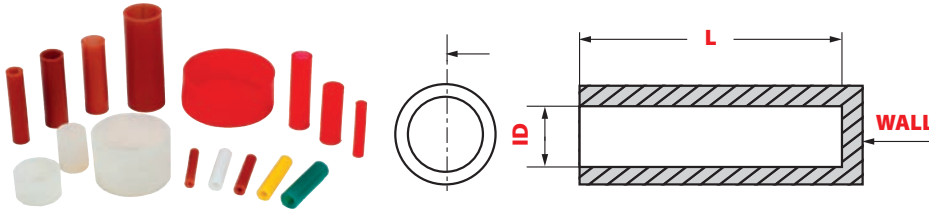
## CONICAL FLANGE PLUGS

Could be used as a plug to cover the hole, and also could be used as a cap to protect the axle

PART NO.	A	B	H	ID	PCS/bag
CCP-250-130	12,7	6,35	23,01	3,3	500
CCP-316-216	12,7	8,03	25,4	5,49	500
CCP-335-177	15,88	8,51	25,4	4,5	500
CCP-394-197	16,51	10,01	27,99	5	500
CCP-400-230	16,13	10,16	27,94	5,84	250

PART NO.	A	B	H	ID	PCS/bag
CCP-551-315	19,05	14	35,99	8	250
CCP-689-453	24,89	17,5	38,1	11,51	250
CCP-767-532	27,94	19,48	51,03	13,51	100
CCP-819-583	25,4	20,8	49	14,81	100
CCP-866-630	30,99	22	53,01	16	100

# CAPS AND PLUGS

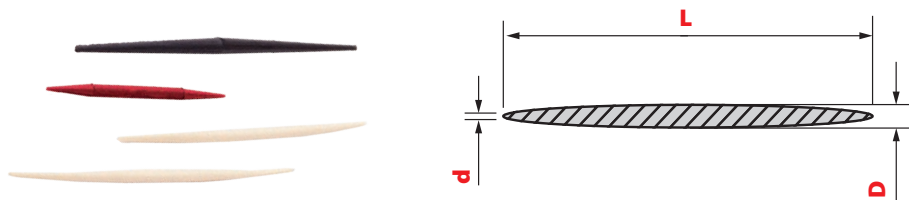


## FLAT CAPS

Protector flat caps for bolts, temp up to 315°, closed on one side, easy to clean

PART NO.	ID mm	L mm	Wall mm	v PCS/bag
CFP-70-1000	1,78	25,4	1,52	1000
CFP-100-1000	2,54	25,4	1,52	1000
CFP-100-1120	2,54	28,45	1,52	1000
CFP-120-400	3,05	10,16	1,52	1000
CFP-120-1000	3,05	25,4	1,52	1000
CFP-145-1120	3,68	28,45	1,52	1000
CFP-148-1000	3,76	25,4	1,52	1000
CFP-172-800	4,37	20,32	1,52	1000
CFP-175-1000	4,45	25,4	1,52	1000
CFP-185-1120	4,7	28,45	1,52	1000
CFP-220-1120	5,59	28,45	1,52	1000
CFP-220-1650	5,59	41,91	1,52	1000
CFP-223-1500	5,66	38,1	1,52	1000
CFP-234-1500	5,94	38,1	1,52	1000
CFP-295-250	7,49	6,35	1,52	1000
CFP-295-1500	7,49	38,1	1,52	500
CFP-300-1120	7,62	28,45	1,52	500
CFP-300-1650	7,62	41,91	1,52	500
CFP-355-1500	9,02	38,1	1,52	500
CFP-375-1120	9,53	28,45	1,52	500
CFP-375-1500	9,53	38,1	1,52	500
CFP-393-728	9,98	18,49	1,52	500
CFP-415-1500	10,54	38,1	1,52	500
CFP-440-728	11,18	18,49	1,52	500
CFP-456-1120	11,58	28,45	1,52	500
CFP-456-1500	11,58	38,1	1,52	500

PART NO.	ID mm	L mm	Wall mm	v PCS/bag
CFP-480-1500	12,19	38,1	1,52	500
CFP-535-1500	13,59	38,1	1,52	500
CFP-590-708	14,99	17,98	1,52	500
CFP-600-1500	15,24	38,1	1,52	250
CFP-640-900	16,26	22,86	1,52	250
CFP-640-2000	16,26	50,8	1,52	250
CFP-665-732	16,89	18,59	1,52	250
CFP-687-330	17,45	8,38	1,52	250
CFP-722-4555	18,34	115,7	1,52	100
CFP-728-452	18,49	11,48	1,52	250
CFP-730-1500	18,54	38,1	1,52	250
CFP-730-4000	18,54	101,6	1,52	100
CFP-736-728	18,69	18,49	1,52	250
CFP-811-728	20,6	18,49	1,52	250
CFP-855-1500	21,72	38,1	1,52	250
CFP-921-728	23,39	18,49	1,52	250
CFP-970-4000	24,64	101,6	1,52	100
CFP-980-1500	24,89	38,1	1,52	250
CFP-1000-650	25,4	16,51	1,52	250
CFP-1291-905	32,79	22,99	1,52	100
CFP-1555-1102	39,5	27,99	1,52	100
CFP-1649-1102	41,88	27,99	1,52	100
CFP-1772-670	45,01	17,02	1,52	100
CFP-1850-1102	46,99	27,99	1,52	100
CFP-1957-1515	49,71	38,48	1,52	100
CFP-2885-1000	73,28	25,4	1,52	50



## MOUSE TAPS

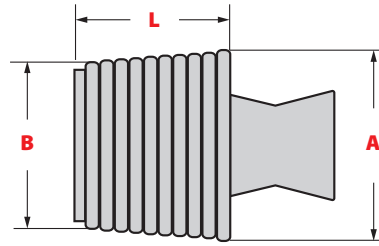
Thin silicone rubber strips to facilitate masking of small holes. Silicone temp up to 315°

PART NO.	D mm	d mm	L mm	PCS/bag
TAP-79	2,01	0,56	33,78	1000
TAP-80	2,03	0,58	52,83	1000
TAP-83	2,11	0,79	49,02	1000

PART NO.	D mm	d mm	L mm	PCS/bag
TAP-100	2,54	0,79	52,83	1000
TAP-125	3,18	0,58	50,8	1000



# CAPS AND PLUGS



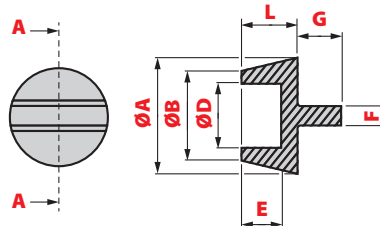
## FLANGELESS PLUGS

This plug has soft ribs which give effective masking to threaded holes this type of plug also minimized the risk of unwanted paint ridges at the thread entrance.

Silicone temp up to 315°

PART NO.	A mm	B mm	L mm	PCS/bag
CTRP-157-079	3,99	2,01	19,05	500
CTRP-236-157	5,99	3,99	25,4	250
CTRP-315-236	8	5,99	25,4	250
CTRP-394-315	10,01	8	25,4	250
CTRP-406-313	10,31	7,95	25,4	250
CTRP-468-406	11,89	10,31	25,4	250
CTRP-472-394	11,99	10,01	25,4	250
CTRP-551-472	14	11,99	25,4	250
CTRP-562-468	14,27	11,89	25,4	250
CTRP-625-562	15,88	14,27	25,4	250
CTRP-630-551	16	14	25,4	250
CTRP-709-630	18,01	16	25,4	250

PART NO.	A mm	B mm	L mm	PCS/bag
CTRP-718-625	18,24	15,88	25,4	250
CTRP-750-718	19,05	18,24	25,4	250
CTRP-787-709	19,99	18,01	25,4	100
CTRP-875-750	22,23	19,05	25,4	100
CTRP-886-787	22,5	19,99	25,4	100
CTRP-945-886	24	22,5	25,4	100
CTRP-1000-875	25,4	22,23	25,4	100
CTRP-1024-945	26,01	24	25,4	100
CTRP-1102-1024	27,99	26,01	25,4	100
CTRP-1125-1000	28,58	25,4	25,4	100
CTRP-1250-1125	31,75	28,58	25,4	100

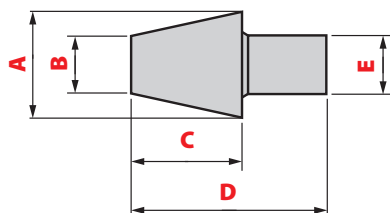
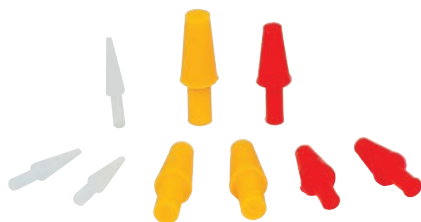


## HOLLOW TAPED PLUGS WITH HANDLE

Tapered design to fit variety of hole diameters. Handle is making easy to use during work process.

Temp. Resistance to 315°

PART NO.	A mm	B mm	L mm	D mm	E mm	F mm	G mm	PCS/bag
SSP1063-H	27	23,01	25,4	10,31	19,05	10,21	19,05	100
SSP1250-H	31,75	26,19	25,4	13,49	19,05	12,7	19,05	100
SSP1437-H	36,5	30,15	25,4	17,45	19,05	12,7	19,05	50
SSP1969-H	50,01	41,28	25,4	28,58	19,05	12,7	19,05	25
SSP2203-H	55,96	47,63	25,4	34,93	19,05	12,7	19,05	25

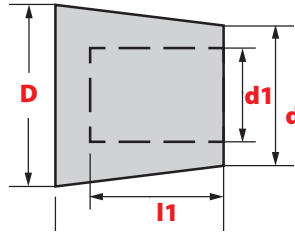


## CONICAL PLUGS WITH HANDLES

Conical plugs with handles helps plugs easily to be removed after working process. Temp. Resistance to 315°

PART NO.	A mm	B mm	C mm	D mm	E mm	PCS/bag
CSP-125-H	3,18	0,79	15,88	25,4	3,18	1000
CSP-125-625-H	3,18	1,6	15,88	25,4	3,18	1000
CSP-187-625-H	4,75	1,6	15,88	25,4	3,18	1000
CSP-250-750-H	6,35	3,18	19,05	31,75	3,18	1000
CSP-343-625-H	8,71	4,75	15,88	28,58	4,75	500
CSP-375-750-H	9,53	6,35	19,05	31,75	6,35	500

# HOLLOW CONICAL STOPPERS



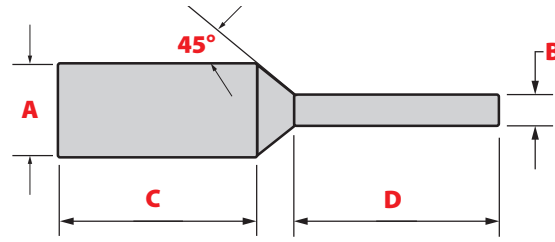
## HOLLOW CONICAL STOPPERS

Traditional conical plug are available with a hollow interior as per the diagram, save material and keep the price low. The holes are designed to fit to several threaded stopper can therefore be used both as inner and outer masking. Silicone temp up to 315°

PART NO.	D mm	d mm	L mm	d1 mm	H mm	PCS/bag
TRSP-1063	27	23,01	25,4	12,5	19,05	100
TRSP-1100	27,94	24	25,4	13	19,05	100
TRSP-1181	30	27,79	25,4	14,5	19,05	100
TRSP-1260	32	26,19	25,4	15,5	19,05	100
TRSP-1338	33,99	27	25,4	17	19,05	100
TRSP-1438	36,53	30,18	25,4	17,48	19,05	100
TRSP-1456	36,98	29,97	25,4	19,9	19,05	100
TRSP-1535	38,99	30,99	25,4	21,8	19,05	50
TRSP-1614	41	33,02	25,4	25	19,05	50
TRSP-1625	41,28	33,35	25,4	20,65	19,05	50
TRSP-1693	43	35,99	25,4	26	19,05	50
TRSP-1750	44,45	37,31	25,4	24,61	19,05	50
TRSP-1772	45,01	37,01	25,4	28,7	19,05	50
TRSP-1810	45,97	38	25,4	25,3	19,05	50
TRSP-1968	49,99	41,99	25,4	31,6	19,05	50
TRSP-2086	52,98	44,96	25,4	32,26	19,05	25
TRSP-2203	55,96	48,01	25,4	35,31	19,05	25
TRSP-2469	62,71	50,01	25,4	30,96	15,88	25
TRSP-2480	62,99	50,01	25,4	30,96	15,88	25
TRSP-2500	63,5	53,98	25,4	34,93	15,88	25
TRSP-2520	64,01	53,98	25,4	34,93	15,88	25
TRSP-2677	68	57,99	25,4	51	19,05	25
TRSP-2688	68,28	57,94	25,4	38,89	15,88	25
TRSP-2953	75,01	61,93	25,4	42,88	15,88	25
TRSP-2953-1375	75,01	61,93	34,93	42,88	25,4	25
TRSP-3010	76,45	72,64	25,4	53,59	15,88	10
TRSP-3228-1500	81,99	68	38,1	42,6	25,4	10
TRSP-3500-1500	88,9	76,2	38,1	50,8	25,4	10
TRSP-3543	89,99	75,01	25,4	49,61	12,7	10
TRSP-3543-1535	89,99	75,01	38,99	62,5	30	10
TRSP-4000-1500	101,6	82,55	38,1	57,15	25,4	10
TRSP-4055-1535	103	82,98	38,99	71,5	30	10
TRSP-5000-2000	127	88,9	50,8	78	30	5



# SILICONE PULL PLUGS



## SILICONE PULL PLUGS

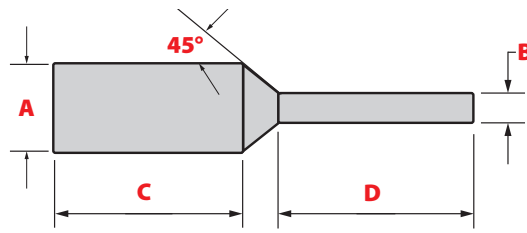
Industry standard solution for threaded and non-threaded through-holes in powder coating and e-coating applications.

Silicone temp up to 315°

PART NO.	A mm	B mm	C mm	D mm	PCS/bag
BOP-62-375	1,57	1,17	9,53	8,56	500
BOP-62-500	1,57	1,02	12,70	12,70	500
BOP-63-625	1,60	1,14	15,88	15,88	500
BOP-67-625	1,70	1,19	15,88	15,49	500
BOP-73-612	1,85	1,17	15,54	14,99	500
BOP-80-1000	2,03	1,14	25,40	25,40	500
BOP-91-625	2,31	1,32	15,88	15,88	500
BOP-91-1000	2,31	1,32	25,40	25,40	500
BOP-93-625	2,36	1,27	15,88	15,88	500
BOP-93-700	2,36	1,60	17,78	17,78	500
BOP-95-1000	2,41	1,32	25,40	25,40	500
BOP-104-625	2,64	1,57	15,88	15,88	500
BOP-105-1000	2,67	2,08	25,40	25,40	500
BOP-109-625	2,77	1,57	15,88	15,88	500
BOP-109-1000	2,77	1,57	25,40	25,40	500
BOP-118-1000	3,00	2,08	25,40	25,40	500
BOP-125-625	3,18	1,57	15,88	15,88	500
BOP-130-625	3,30	2,36	15,88	17,78	500
BOP-130-1000	3,30	2,36	25,40	25,40	500
BOP-140-625	3,56	2,16	15,88	14,17	500
BOP-142-1250	3,61	2,29	31,75	31,75	500
BOP-154-625	3,91	1,57	15,88	15,88	500
BOP-156-625	3,96	1,57	15,88	19,05	500
BOP-156-1250	3,96	2,36	31,75	31,75	500
BOP-158-1000	4,01	2,08	25,40	25,40	500
BOP-158-1250	4,01	2,08	31,75	31,75	500
BOP-158-1500	4,01	2,36	38,10	38,10	500
BOP-160-780	4,06	2,39	19,81	19,81	500
BOP-162-625	4,11	2,44	15,88	14,76	500
BOP-175-1250	4,45	3,12	31,75	31,75	500
BOP-187-625	4,75	2,79	15,88	15,88	500
BOP-190-1250	4,83	3,56	31,75	31,75	500
BOP-190-2250	4,83	2,79	57,15	57,15	500
BOP-195-625	4,95	2,79	15,88	15,88	500
BOP-195-1000	4,95	2,79	25,40	25,40	500
BOP-195-1250	4,95	3,18	31,75	31,75	500
BOP-197-1000	5,00	2,79	25,40	25,40	500
BOP-218-1000	5,54	3,30	25,40	25,40	500
BOP-225-1000	5,72	3,18	25,40	25,40	500

PART NO.	A mm	B mm	C mm	D mm	PCS/bag
BOP-236-400	5,99	4,50	10,16	10,16	500
BOP-236-1250	5,99	4,19	31,75	31,75	500
BOP-244-1250	6,20	4,32	31,75	31,75	500
BOP-250-1250	6,35	3,18	31,75	31,75	500
BOP-257-1000	6,53	3,30	25,40	25,40	500
BOP-257-1250	6,53	3,30	31,75	31,75	500
BOP-260-1000	6,60	3,30	25,40	25,40	500
BOP-265-1250	6,73	4,72	31,75	31,75	500
BOP-275-937	6,99	3,18	23,80	23,37	500
BOP-275-2000	6,99	3,71	50,80	50,80	500
BOP-281-1000	7,14	3,51	25,40	25,40	500
BOP-312-1000	7,92	3,73	25,40	25,40	500
BOP-312-1250	7,92	3,86	31,75	31,75	500
BOP-316-1000	8,03	3,86	25,40	21,59	500
BOP-332-1125	8,43	6,35	28,58	20,29	500
BOP-333-757	8,46	6,38	19,23	26,67	500
BOP-335-1000	8,51	3,89	25,40	25,40	500
BOP-335-1250	8,51	3,89	31,75	31,75	500
BOP-350-900	8,89	4,90	22,86	25,40	500
BOP-355-1000	9,02	3,99	25,40	25,40	250
BOP-370-1181	9,40	4,70	30,00	30,00	250
BOP-375-1000	9,53	3,99	25,40	25,40	250
BOP-375-1250	9,53	4,75	31,75	31,75	250
BOP-384-1000	9,75	3,91	25,40	25,40	250
BOP-384-1250	9,75	3,91	31,75	31,75	250
BOP-384-2000	9,75	3,91	50,80	50,80	250
BOP-388-1000	9,86	3,99	25,40	25,40	250
BOP-400-500	10,16	3,99	12,70	12,70	250
BOP-400-1000	10,16	3,99	25,40	25,40	250
BOP-408-1000	10,36	4,85	25,63	25,40	250
BOP-414-525	10,52	3,99	13,34	19,18	250
BOP-414-1000	10,52	3,99	25,40	25,40	250
BOP-437-1500	11,10	7,62	38,10	38,10	250
BOP-440-1000	11,18	6,60	25,40	25,40	250
BOP-440-2000	11,18	3,99	50,80	50,80	250
BOP-444-1000	11,28	6,48	25,40	25,15	250
BOP-444-1250	11,28	6,48	31,75	31,75	250
BOP-445-1000	11,30	6,48	25,40	25,40	250
BOP-468-1000	11,89	6,35	25,40	25,40	250

# SILICONE PULL PLUGS



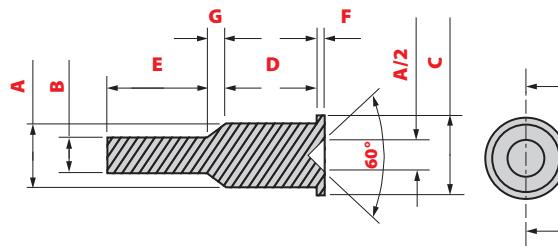
## SILICONE PULL PLUGS

Industry standard solution for threaded and non-threaded through-holes in powder coating and e-coating applications.

Silicone temp up to 315°

PART NO.	A	B	C	D	PCS/bag
BOP-472-1000	11,99	6,17	25,40	25,40	250
BOP-496-1000	12,60	6,35	25,40	25,40	250
BOP-496-2000	12,60	6,35	50,80	50,80	100
BOP-500-1000	12,70	6,35	25,40	25,40	100
BOP-510-1000	12,95	6,50	25,40	24,28	100
BOP-530-1000	13,46	6,35	25,40	25,40	100
BOP-530-2062	13,46	6,35	52,37	52,37	100
BOP-551-1181	14,00	6,35	30,00	30,00	100
BOP-570-1000	14,48	7,92	25,40	25,40	100
BOP-571-1750	14,50	7,70	44,45	44,45	100
BOP-580-1500	14,73	8,00	38,10	38,10	100
BOP-590-1000	14,99	6,35	25,40	25,40	100
BOP-612-1000	15,54	6,35	25,40	25,40	100
BOP-612-2000	15,54	8,26	50,80	50,80	100
BOP-620-1500	15,75	8,36	38,10	38,10	100
BOP-640-1000	16,26	9,53	25,40	25,40	100
BOP-670-1500	17,02	11,94	38,10	38,10	100
BOP-700-1000	17,78	9,53	25,40	25,40	100
BOP-700-1250	17,78	9,53	31,75	31,75	100
BOP-700-1500	17,78	9,53	38,10	38,10	100
BOP-707-1250	17,96	9,53	31,75	33,68	100
BOP-728-1125	18,49	9,53	28,58	27,94	100
BOP-729-1000	18,52	8,00	25,40	25,40	100

PART NO.	A	B	C	D	PCS/bag
BOP-729-1500	18,52	9,80	38,10	38,10	100
BOP-750-1000	19,05	9,53	25,40	25,40	100
BOP-770-1000	19,56	9,53	25,40	23,55	100
BOP-770-1125	19,56	9,53	28,58	28,58	50
BOP-770-1500	19,56	10,36	38,10	38,10	50
BOP-770-1960	19,56	10,36	49,78	53,34	50
BOP-798-650	20,27	10,16	16,51	20,32	50
BOP-807-1250	20,50	10,87	31,75	31,75	50
BOP-807-1500	20,50	10,87	38,10	38,10	50
BOP-809-1000	20,55	8,00	25,40	25,40	50
BOP-843-2000	21,41	9,53	50,80	50,80	50
BOP-850-2250	21,59	11,43	57,15	57,15	50
BOP-888-1000	22,56	9,45	25,40	25,40	50
BOP-896-1000	22,76	9,53	25,40	25,40	50
BOP-897-1500	22,78	9,53	38,10	38,10	50
BOP-1000-1000	25,40	9,53	25,40	25,40	50
BOP-1020-1000	25,91	9,53	25,40	24,64	50
BOP-1020-1250	25,91	9,53	31,75	31,75	50
BOP-1220-1250	30,99	9,53	31,75	31,75	50
BOP-1380-1000	35,05	12,70	25,40	25,40	50
BOP-1380-1500	35,05	18,57	38,10	38,10	25
BOP-1450-1000	36,83	12,70	25,40	25,40	25
BOP-1713-2756	43,51	22,00	70,00	70,00	25



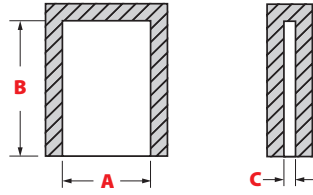
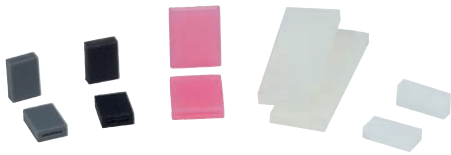
## METRIC CYLINDRICAL PULL PLUGS

The edge on the larger diameter works as a mask stop or masking of entrance thread. This pull plug is designed for metric threads.

PART NO.	A	B	C	D	E	F	G	PCS/bag
BSP-173	4,39	2,49	6,35	25,4	25,4	1,52	0,64	500
BSP-210	5,33	3,3	9,14	12,7	12,7	1,02	1,02	500
BSP-218	5,54	3,18	8,64	25,4	26,19	1,78	1,73	500
BSP-230	5,84	3,18	8,89	25,4	26,19	1,78	2,51	500
BSP-285	7,24	4,06	10,16	25,4	26,97	1,78	2,49	500
BSP-335	8,51	4,06	11,68	25,4	26,19	1,78	3,25	500
BSP-350	8,89	4,75	12,01	25,4	26,97	1,78	3,76	500
BSP-420	10,67	5,97	13,72	25,4	26,97	1,78	4,27	250
BSP-445	11,3	6,1	14,22	25,4	26,97	1,78	4,83	250
BSP-490	12,45	6,48	15,49	25,4	25,4	1,98	3	250



# CAPS AND PLUGS

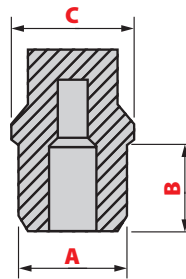


## FLAT-CONNECTION CAPS

Silicone flat-connection caps for electric connections. With high-temperature up to 315 C.

PART NO.	A mm	B mm	C mm	PCS/bag
CP157	3,99	19,99	0,61	1000
CP232	5,89	11	0,79	1000
CP250	6,35	10,92	0,79	1000
CP312	7,92	8,26	0,64	1000

PART NO.	A mm	B mm	C mm	PCS/bag
CP460	11,68	7,11	0,89	500
CP470	11,94	9,5	1,02	500
CP490	12,45	17,45	1,19	500
CP511	12,98	50,04	1,02	500



## BLIND-HOLE THREAD MASK PLUGS

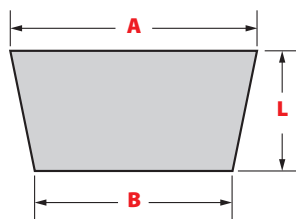
Shallow Design is Ideal for Blind Hole Applications.

PART NO.	A mm	B mm	C mm	PCS/bag
SP-138	3,51	5,33	3,51	500
SP-161	4,09	5,84	4,09	500
SP-207	5,26	5,59	5,26	500
SP-208	5,28	7,49	6,3	500
SP-210	5,33	5,08	6,35	500
SP-218	5,54	5,08	6,6	500
SP-218L	5,54	7,09	6,6	500
SP-278	7,06	5,08	8,13	500
SP-278L	7,06	7,09	8,13	500
SP-283	7,19	5,08	8,51	500
SP-283L	7,19	7,49	8,41	500
SP-336	8,53	6,35	9,78	500
SP-336L	8,53	8,36	9,78	500

PART NO.	A mm	B mm	C mm	PCS/bag
SP-358	9,09	6,12	10,39	250
SP-358L	9,09	7,01	10,39	250
SP-394	10,01	8,9	11,43	250
SP-426	10,82	8,79	12,42	250
SP-451	11,46	8,94	12,95	250
SP-477	12,12	7,62	13,96	250
SP-510	12,95	7,62	13,97	250
SP-583	14,81	10,36	17,02	100
SP-643	16,33	9,53	18,62	100
SP-724	18,39	13	20,6	100
SP-825	20,96	9,53	23,24	100
SP-840	21,34	13,59	23,9	100
SP-896	22,76	16	24,05	100



# CONICAL WASHER PLUGS



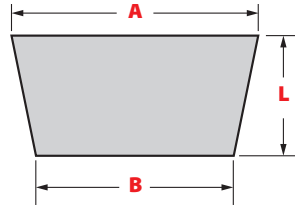
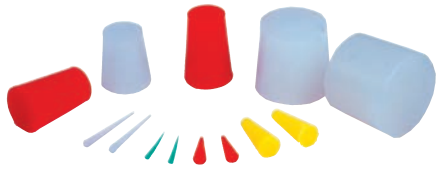
## CONICAL PLUGS

Conical plugs, up to 315°C, to close holes

PART NO.	A mm	B mm	L mm	PCS/bag
TRP-63-625	1,6	0,41	15,88	1000
TRP-78-750	1,98	0,51	19,05	1000
TRP-78-1000	1,98	0,51	25,4	1000
TRP-100-625	2,54	0,81	15,88	1000
TRP-100-1000	2,54	0,81	25,4	1000
TRP-125	3,18	0,79	15,88	1000
TRP-125-625	3,18	1,6	15,88	1000
TRP-177-591	4,5	1,5	15,01	1000
TRP-187-394	4,75	2,79	10,01	1000
TRP-187-625	4,75	1,6	15,88	1000
TRP-187-750	4,75	1,6	19,05	1000
TRP-188-2200	4,78	1,19	55,88	1000
TRP-197-1100	5	1,19	27,89	1000
TRP-200-750	5,08	1,6	19,05	1000
TRP-216-1500	5,49	1,19	38,1	1000
TRP-218-250	5,54	4,7	6,35	1000
TRP-250-750	6,35	3,18	19,05	1000
TRP-250-1000	6,35	3,18	25,4	1000
TRP-276-787	7,01	3	19,99	1000
TRP-315-787	8	3,99	19,99	1000
TRP-343-625	8,71	4,78	15,88	1000
TRP-343-750	8,71	4,78	19,05	1000
TRP-343-1000	8,71	4,78	25,4	1000
TRP-354-984	8,99	4,5	24,99	1000
TRP-375-500	9,53	6,35	12,7	500
TRP-375-750	9,53	6,35	19,05	500
TRP-375-1000	9,53	6,35	25,4	500
TRP-375-1250	9,53	3,18	31,75	500
TRP-393-787	9,98	6	19,99	500
TRP-394-1890	10,01	5	48,01	500
TRP-395-1969	10,03	5	50,01	500
TRP-433-748	11	8	19	500
TRP-433-1063	11	8	27	500
TRP-437-1000	11,1	6,35	25,4	500
TRP-438-688	11,13	8,74	17,48	500
TRP-438-748	11,13	8,99	19	500
TRP-469-813	11,91	8,74	20,65	500
TRP-472-748	11,99	8,99	19	500
TRP-473-787	12,01	7,9	19,99	500
TRP-487-748	12,37	8,99	19	500

PART NO.	A mm	B mm	L mm	PCS/bag
TRP-500-813	12,7	7,92	20,65	250
TRP-500-1000	12,7	7,9	25,4	250
TRP-500-2000	12,7	3,2	50,8	250
TRP-512-984	13	8,99	24,99	250
TRP-512-1125	13	7,95	28,58	250
TRP-562-1125	14,27	7,95	28,58	250
TRP-563-1000	14,3	9,53	25,4	250
TRP-591-787	15,01	11	19,99	250
TRP-594-1000	15,09	10,31	25,4	250
TRP-625-813	15,88	11,1	20,65	250
TRP-625-875	15,88	11,13	22,23	250
TRP-625-1000	15,88	12,7	25,4	250
TRP-656-1000	16,66	12,7	25,4	250
TRP-669-1000	16,99	13	25,4	250
TRP-687-787	17,45	14	19,99	250
TRP-687-1000	17,45	11,13	25,4	250
TRP-709-787	18,01	14	19,99	250
TRP-748-1000	19	14,27	25,4	100
TRP-787-1000	19,99	15,88	25,4	100
TRP-800-625	20,32	15,88	15,88	100
TRP-812-1000	20,62	15,88	25,4	100
TRP-827-1000	21,01	16	25,4	100
TRP-925-750	23,5	19,05	19,05	100
TRP-925-1000	23,5	19,05	25,4	100
TRP-938-1000	23,83	18,26	25,4	100
TRP-945-750	24	19,2	19,05	100
TRP-946-1181	24,03	18,01	30	100
TRP-990-795	25,15	22,4	20,19	100
TRP-990-885	25,15	19,99	22,48	100
TRP-1000-1000	25,4	19,84	25,4	100
TRP-1024-795	26,01	22,35	20,19	100
TRP-1024-1000	26,01	19,99	25,4	100
TRP-1062-0984	26,97	22	24,99	100
TRP-1063-1000	27	23,01	25,4	100
TRP-1100-1000	27,94	23,83	25,4	100
TRP-1102-2000	27,99	19,05	50,8	100
TRP-1181-1000	30	27,79	25,4	100
TRP-1220-1181	30,99	24,99	30	100
TRP-1250-1000	31,75	26,19	25,4	100
TRP-1313-1000	33,35	27	25,4	100

# CAPS AND PLUGS

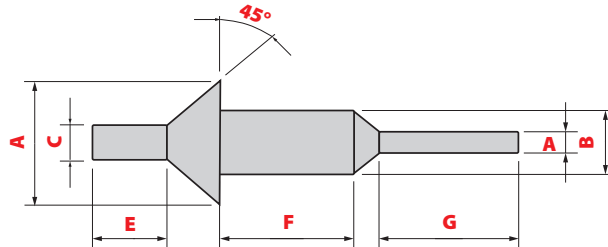
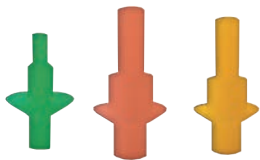


## CONICAL PLUGS

Conical plugs, up to 315°C, to close holes

PART NO.	A mm	B mm	L mm	PCS/bag
TRP-1338-1000	33,99	27	25,4	100
TRP-1438-1000	36,53	30,18	25,4	100
TRP-1456-1000	36,98	30,18	25,4	100
TRP-1496-1378	38	30,99	35	50
TRP-1531-1000	38,89	31,75	25,4	50
TRP-1614-1000	41	33,02	25,4	50
TRP-1615-1378	41,02	34,01	35	50
TRP-1625-1000	41,28	33,35	25,4	50
TRP-1688-1000	42,88	35,71	25,4	50
TRP-1732-1575	43,99	36	40,01	50
TRP-1750-1000	44,45	37,31	25,4	50
TRP-1772-1000	45,01	37,01	25,4	50
TRP-1813-1000	46,05	38,1	25,4	50
TRP-1929-1575	49	41	40,01	50
TRP-1969-1000	50,01	41,28	25,4	50

PART NO.	A mm	B mm	L mm	PCS/bag
TRP-2063-1000	52,4	44,45	25,4	25
TRP-2086-1000	52,98	44,96	25,4	25
TRP-2165-1575	54,99	46,99	40,01	25
TRP-2203-1000	55,96	47,63	25,4	25
TRP-2362-1772	59,99	50	45,01	25
TRP-2469-1000	62,71	50,01	25,4	25
TRP-2480-1000	62,99	50,01	25,4	25
TRP-2500-1000	63,5	53,98	25,4	25
TRP-2688-1000	68,28	57,94	25,4	25
TRP-2953-1375	75,01	61,93	34,93	25
TRP-3500-1500	88,9	76,2	38,1	10
TRP-3543-1535	89,99	75,01	38,99	10
TRP-4000-1500	101,6	82,55	38,1	10
TRP-4055-1535	103	82,98	38,99	10
TRP-5000-2000	127	88,9	50,8	5

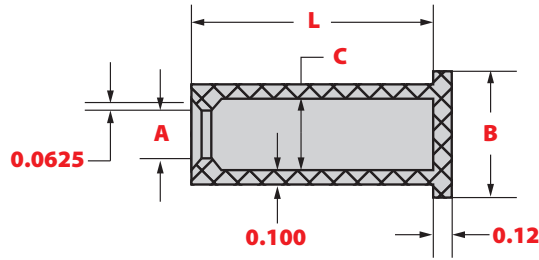


## WASHER PULL PLUGS

Conical plugs, up to 315°C, to close holes

PART NO.	A mm	B mm	C mm	D mm	E mm	F mm	G mm	PCS/bag
PWP-114	10,0	2,9	2,5	2,5	10,0	15,0	20,0	1000
PWP-118	10,0	3,0	3,4	2,0	10,0	10,0	10,0	1000
PWP-138	10,0	3,5	3,8	2,2	10,0	10,0	15,0	1000
PWP-150	10,0	3,8	3,0	3,0	10,0	15,0	20,0	1000
PWP-157	10,0	4,0	3,4	2,2	10,0	10,0	9,0	1000
PWP-175	10,0	4,5	3,8	2,5	12,7	9,9	9,9	1000
PWP-177	12,0	4,5	3,0	3,0	10,0	15,0	20,0	1000
PWP-185	12,7	4,7	4,8	3,0	10,2	9,9	11,0	1000
PWP-197-394	10,0	5,0	3,7	3,7	10,0	10,0	10,0	1000
PWP-197	15,0	5,0	4,0	4,0	10,0	15,0	20,0	250
PWP-217	14,0	5,5	4,0	4,0	10,0	15,0	20,0	250
PWP-236	15,0	6,0	5,0	3,6	10,0	10,0	9,0	250
PWP-291	16,0	7,4	4,0	4,0	10,0	15,0	20,0	250
PWP-315	15,0	8,0	5,0	5,0	10,0	10,0	15,3	250
PWP-362	18,0	9,2	5,0	5,0	10,0	15,0	25,0	250
PWP-394	20,0	10,0	7,5	5,7	10,0	10,0	19,3	100
PWP-433	20,0	11,0	5,0	5,0	10,0	15,0	25,0	100

# CAPS AND PLUGS



## EASY USE CAPSULE

Caps are ideal for large diameter or long length

PART NO.	A mm	B mm	C mm	L mm	PCS/bag
YZP-112-1180	2,84	16,18	6,02	29,97	500
YZP-125-2000	3,18	16,51	6,35	50,8	250
YZP-135-1180	3,43	16,76	6,6	29,97	500
YZP-138-1180	3,51	16,84	6,68	29,97	500
YZP-156-2000	3,96	17,3	7,14	50,8	250
YZP-157-1180	3,99	17,32	7,16	29,97	500
YZP-165-1016	4,19	17,53	7,37	25,81	500
YZP-177-1180	4,5	17,83	7,67	29,97	500
YZP-180-2000	4,57	17,91	7,75	50,8	250
YZP-187-1377	4,75	18,08	7,92	34,98	500
YZP-187-1747	4,75	18,08	7,92	44,37	250
YZP-197-1180	5,2	15,8	9,4	28	500
YZP-234-2000	5,94	19,28	9,12	50,8	250
YZP-236-1180	5,99	19,33	9,17	29,97	250
YZP-255-910	6,48	19,81	9,65	23,11	250
YZP-255-1180	6,48	19,81	9,65	29,97	250
YZP-270-1200	6,86	20,19	10,03	30,48	250
YZP-275-1180	6,99	20,32	10,16	29,97	250
YZP-294-1330	7,47	20,8	10,64	33,78	250
YZP-315-974	8	21,34	11,18	24,74	250
YZP-315-1180	8	21,34	11,18	29,97	250
YZP-315-1425	8	21,34	11,18	36,2	250
YZP-320-670	8,13	21,46	11,3	17,02	250
YZP-330-1500	8,38	21,72	11,56	38,1	250
YZP-355-1500	9,02	22,35	12,19	38,1	250
YZP-360-1000	9,14	22,48	12,32	25,4	250
YZP-375-1000	9,53	22,86	12,7	25,4	250
YZP-375-1421	9,53	22,86	12,7	36,09	250
YZP-380-1000	9,65	22,99	12,83	25,4	250
YZP-394-1180	10,01	23,34	13,18	29,97	250
YZP-433-1180	11	24,33	14,17	29,97	250
YZP-438-950	11,13	24,46	14,3	24,13	250
YZP-451-1215	11,46	24,79	14,63	30,86	250
YZP-485-500	12,32	25,65	15,49	12,7	250
YZP-485-750	12,32	25,65	15,49	19,05	250
YZP-485-1013	12,32	25,65	15,49	25,73	250
YZP-485-1600	12,32	26,29	16,12	40,64	250
YZP-492-1180	12,5	25,83	15,67	29,97	250
YZP-531-1180	13,49	26,82	16,66	29,97	100
YZP-586-512	14,88	28,22	18,06	13	250

PART NO.	A mm	B mm	C mm	L mm	PCS/bag
YZP-587-374	14,91	28,24	18,08	9,5	250
YZP-608-493	15,44	28,78	18,62	12,52	250
YZP-608-990	15,44	28,78	18,62	25,15	250
YZP-608-1180	15,44	28,78	18,62	29,97	100
YZP-622-1180	15,8	29,13	18,97	29,97	100
YZP-622-1575	15,8	29,13	18,97	40,01	100
YZP-622-3120	15,8	29,13	18,94	79,25	100
YZP-687-1180	17,45	30,78	20,62	29,97	50
YZP-689-3579	17,5	30,84	20,68	90,91	50
YZP-725-3120	18,4	28,56	18,4	85,1	50
YZP-850-410	21,59	34,93	24,77	10,41	100
YZP-906-3500	23,01	36,35	26,19	88,9	50
YZP-963-3000	24,46	37,8	27,64	76,2	50
YZP-980-1500	24,89	38,23	28,07	38,1	50
YZP-980-1654	24,9	38	26,9	42	50
YZP-1118-540	28,4	41,73	31,57	13,72	100
YZP-1125-5000	28,58	41,91	31,75	127	50
YZP-1230-5000	31,24	44,58	34,42	127	50
YZP-1240-1760	31,5	44,83	34,67	44,7	50
YZP-1288-4128	32,72	46,05	35,89	104,85	25
YZP-1567-1517	39,8	53,14	42,98	38,53	50
YZP-1850-1850	46,99	53,14	50,17	46,99	50
YZP-1921-1575	48,79	62,13	51,97	40,01	50
YZP-2244-1811	57	70,33	60,17	46	25
YZP-2250-1920	57,15	70,49	60,33	48,77	25
YZP-2500-2420	63,5	76,84	66,68	61,47	25
YZP-2660-726	67,56	80,9	70,74	18,44	25
YZP-2750-2670	69,9	84,4	74,3	69,6	25
YZP-3000-2920	76,2	89	79,38	74,17	25
YZP-3154-0730	80,11	92,68	83,29	18,54	25
YZP-3189-413	81	94,34	84,18	10,49	25
YZP-3200-996	81,28	94,62	84,46	25,3	25
YZP-3248-783	82,5	95,83	85,67	19,89	25
YZP-3287-681	83,49	96,82	86,66	17,3	25
YZP-3362-256	85,39	98,73	88,57	6,5	25
YZP-3425-705	87	100,33	90,17	17,91	25
YZP-3465-819	88,01	101,35	91,19	20,8	25
YZP-3500-3420	88,9	102,24	92,08	86,87	25
YZP-3622-661	92	105,33	95,17	16,79	25

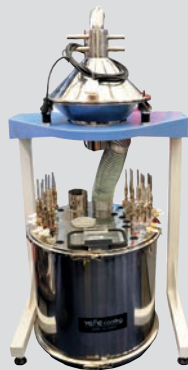


# POWDER COATING EQUIPMENT

» We provide various solutions for surface finishing. From our product range for powder coaters You will find products from manual coating guns to complexed fully automated coating lines. We welcome You to contact us and request a customized quotation.



- » Powder coating manual sets
- » Powder coating powder booths
- » Powder coating pretreatment systems
- » Powder coating drying ovens
- » Powder coating curing ovens
- » Powder coating robots
- » Spare parts.



# POWDER COATING EQUIPMENT

Item	Coating Booth
BOOTH TYPE	Closed
OPERATOR DIMENSIONS	W1500*D1000*H1700mm
OVERALL DIMENSIONS	W1640*D2070*H2180mm
WEIGHT	150kg
POWER SUPPLY	Electric
NOMINAL POWER	2.2kw
VOLTAGE	380V
FREQUENCY	50-60Hz
FILTERS	Polyester
FILTERS COUNT	2 (325*900)
FILTERS HANG TYPE	easy for change
FILTER CLEANING SYSTEM	Pneumatic
AIR CONSUMPTION	4000m3/h
WARRANTY	12 months



MODEL	Powder coating oven
WORKSIZE DIMENSIONS	845width x 1600 height x 845 depth
OVERALL DIMENSIONS	1400 width x 2200 height x 1100 depth
POWER SUPPLY	Electric/ 6.5kw
VOLTAGE/FREQUENCY	110V/220v(50-60hz)
WARM-UP TIME	15-30 min. (180° C)
TEMPERATURE STABILITY	< ± 3-5°C
TEMPERATURE MAX.	250° C
VENTILATION PERFORMANCE	805-1677m3/h
MOTOR POWER	0.55kw
CIRCULATION/ AIR FLOW	Vertical ,Variable through holes on the walls
WARRANTY	12 months



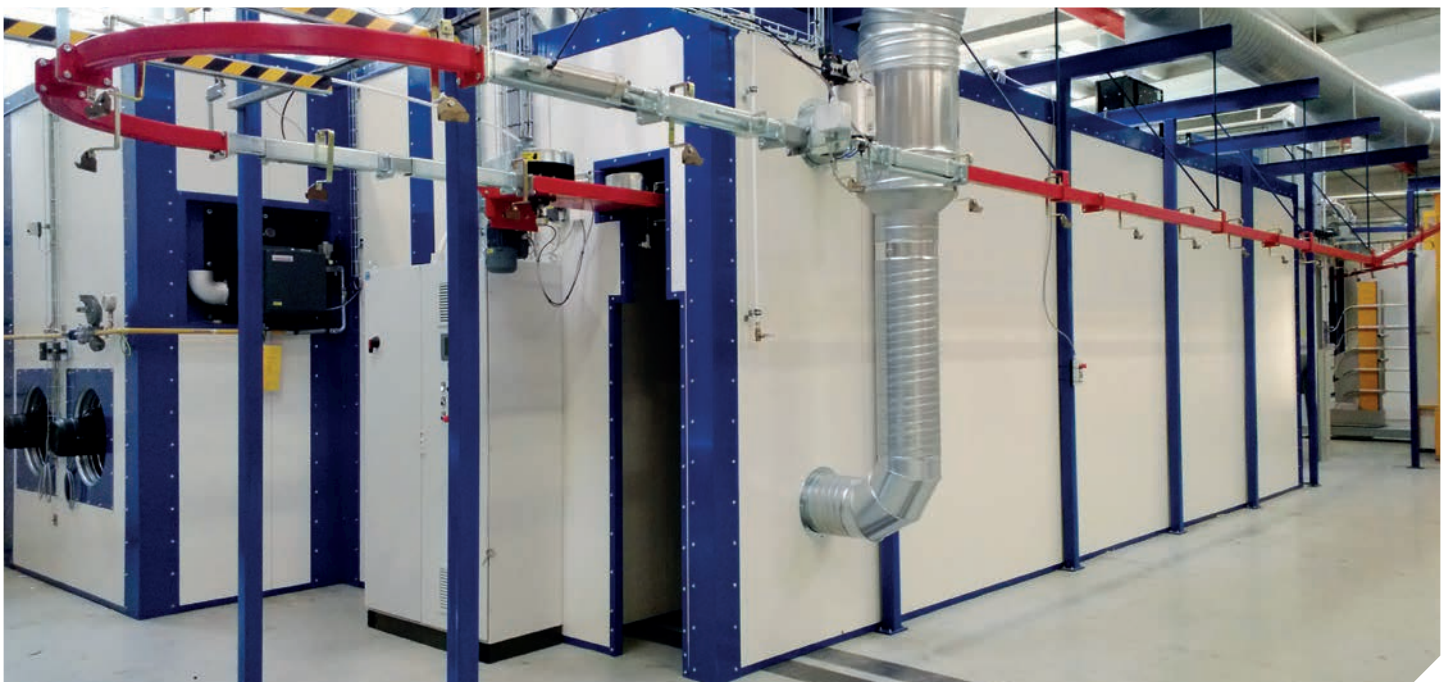
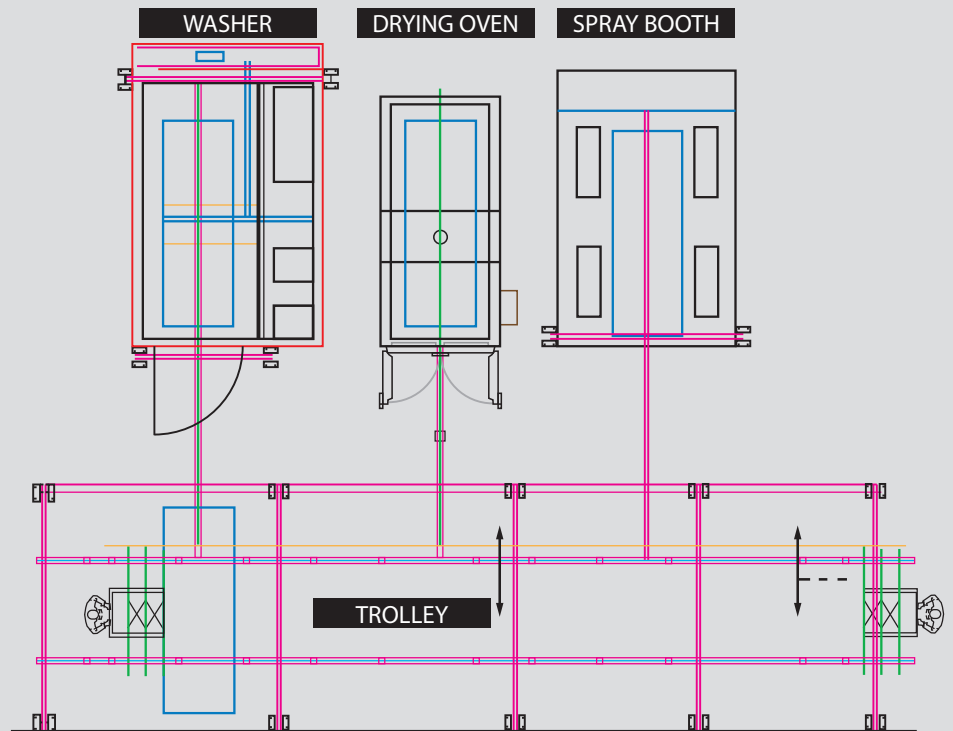
ITEM	Manual Coating System
SPRAY GUN	<p><b>Different models from different producers are available.</b></p>
CONTROLLER	
HOPPER	
VOLTAGE:	
FREQUENCY:	
WEIGHT:	
POWDER CONSUMPTION.	
PRESSURE IN :	
PRESSURE OUT:	
POWDER HOSE:	
CERTIFICATION:	
POWER	
WARRANTY:	12 months





# POWDER COATING EQUIPMENT

## EXAMPLE COATING LINE EQUIPMENT



# POWDER BOOTHS



<b>Model</b>	<b>PVE-S-04548-T</b>
<b>Booth Type</b>	<b>LAB</b>
<b>Operator dimensions</b>	<b>D480*W400*H500mm</b>
<b>Overall dimensions</b>	<b>D560*W535*H950mm</b>
<b>Weight</b>	<b>50kg</b>
<b>Power supply</b>	<b>Electric</b>
<b>Nominal power</b>	<b>50W</b>
<b>Voltage</b>	<b>380V</b>
<b>Frequency</b>	<b>50-60Hz</b>
<b>Filters</b>	<b>car use</b>
<b>Filters count</b>	<b>1</b>
<b>Filters hang type</b>	<b>easy for change</b>
<b>Filter cleaning system</b>	<b>Pneumatic</b>
<b>Air consumption</b>	<b>4000m3/h</b>
<b>Warranty</b>	<b>12 months</b>



<b>Model</b>	<b>PVE-S-1517</b>
<b>Booth Type</b>	<b>Closed</b>
<b>Operator dimensions</b>	<b>W1500*D1000*H1700mm</b>
<b>Overall dimensions</b>	<b>W1640*D2070*H2180mm</b>
<b>Weight</b>	<b>150kg</b>
<b>Power supply</b>	<b>Electric</b>
<b>Nominal power</b>	<b>2.2kw</b>
<b>Voltage</b>	<b>380V</b>
<b>Frequency</b>	<b>50-60Hz</b>
<b>Filters</b>	<b>Polyester</b>
<b>Filters count</b>	<b>2 (325*900)</b>
<b>Filters hang type</b>	<b>easy for change</b>
<b>Filter cleaning system</b>	<b>Pneumatic</b>
<b>Air consumption</b>	<b>4000m3/h</b>
<b>Warranty</b>	<b>12 months</b>



<b>Model</b>	<b>PVE-S-2315</b>
<b>Booth Type</b>	<b>Closed</b>
<b>Operator dimensions</b>	<b>D1500*W2300*H1500mm</b>
<b>Overall dimensions</b>	<b>D2070*W2750*H2180mm</b>
<b>Weight</b>	<b>450kg</b>
<b>Power supply</b>	<b>Electric</b>
<b>Nominal power</b>	<b>4kw</b>
<b>Voltage</b>	<b>380V 3PHASE</b>
<b>Frequency</b>	<b>50-60Hz</b>
<b>Filters</b>	<b>Polyester</b>
<b>Filters count</b>	<b>4 (325*900)</b>
<b>Filters hang type</b>	<b>easy for change</b>
<b>Filter cleaning system</b>	<b>Pneumatic</b>
<b>Air consumption</b>	<b>6677-13353m3/h</b>
<b>Warranty</b>	<b>12 months</b>

# POWDER BOOTHS



<b>Model</b>	<b>PVE-S-1115</b>
<b>Booth Type</b>	<b>Closed</b>
<b>Operator dimensions</b>	<b>1000width x 1500 height x 1000 depth</b>
<b>Overall dimensions</b>	<b>1700width x 1860 height x 1490 depth</b>
<b>Weight</b>	<b>200kg</b>
<b>Power supply</b>	<b>Electric</b>
<b>Nominal power</b>	<b>1.5kW</b>
<b>Voltage</b>	<b>380V</b>
<b>Frequency</b>	<b>50-60Hz</b>
<b>Filters</b>	<b>Polyester</b>
<b>Filters count</b>	<b>1</b>
<b>Filters hang type</b>	<b>easy for change</b>
<b>Filter cleaning system</b>	<b>Pneumatic</b>
<b>Warranty</b>	<b>12 months</b>



<b>Model</b>	<b>PVE-S-3222</b>
<b>Booth Type</b>	<b>walk in</b>
<b>Operator dimensions</b>	<b>3000width x 2000 height x 1700 depth</b>
<b>Overall dimensions</b>	<b>3080width x 2080 height x 2200 depth</b>
<b>Weight</b>	<b>450kg</b>
<b>Power supply</b>	<b>Electric</b>
<b>Nominal power</b>	<b>3.5kW</b>
<b>Voltage</b>	<b>380V</b>
<b>Frequency</b>	<b>50-60Hz</b>
<b>Filters</b>	<b>Polyester</b>
<b>Filters count</b>	<b>4</b>
<b>Filters hang type</b>	<b>easy for change</b>
<b>Filter cleaning system</b>	<b>Pneumatic</b>
<b>Warranty</b>	<b>12 months</b>



<b>Model</b>	<b>PVE-S-2818</b>
<b>Booth Type</b>	<b>open</b>
<b>Operator dimensions</b>	<b>2800width x 1800 height x 1000 depth</b>
<b>Overall dimensions</b>	<b>2800width x 2300 height x 1700 depth</b>
<b>Weight</b>	<b>450kg</b>
<b>Power supply</b>	<b>Electric</b>
<b>Nominal power</b>	<b>3.5kW</b>
<b>Voltage</b>	<b>380V</b>
<b>Frequency</b>	<b>50-60Hz</b>
<b>Filters</b>	<b>Polyester</b>
<b>Filters count</b>	<b>3</b>
<b>Filters hang type</b>	<b>easy for change</b>
<b>Air consumption</b>	<b>10,200m3/h</b>
<b>Filter cleaning system</b>	<b>Pneumatic</b>
<b>Warranty</b>	<b>12 months</b>



# POWDER BOOTHS



Model	PVE-S-2152
Booth Type	Closed-drive-thru
Operator dimensions	1400width x 1800 height x 1000 depth
Overall dimensions	2500width x 2300 height x 1500 depth
Weight	450kg
Power supply	Electric
Nominal power	3.5kW
Voltage	380V
Frequency	50-60Hz
Filters	Polyester
Filters count	2
Filters hang type	easy for change
Filter cleaning system	Pneumatic
Air consumption	10,200m3/h
Warranty	12 months



Model	PVE-S-3212
Booth Type	drive-thru
Operator dimensions	620width x 1500 height x 2920 depth (2PCS)
Overall dimensions	1200width x 2033 height x 3000 depth
Weight	500kg
Power supply	Electric
Nominal power	3.5kW
Voltage	380V
Frequency	50-60Hz
Filters	Polyester
Filters count	3
Filters hang type	easy for change
Filter cleaning system	Pneumatic
Warranty	12 months



# CURING OVENS



Gas Oven	PVE-sG001
Inner Size	L3500mm*W1800mm*H1800mm
Outer Size:	L4700mm*W2000mm*H2060mm
Material:	t1.2mm galvanized plate
Thickness Insulation:	100mm
Power supply:	GAS
Voltage:	380V
Frequency:	50-60Hz
Door type:	single sided
Warm-up time:	15 min. (180-220° C)
Homogeneity:	< ± 3°C if 185°C
Temperature stability:	< ± 1°C
Temperature max.	230° C
Transport:	Top
Air circulation:	Forced
Band of burner:	Italian Riello
Model of burner	RIELLO 40 FS 20
burner capacity:	200,000 KCAL
power of motor	1.5KW
Warranty:	12 Months



Diesel Oven	PVE-sD002
Inner Size	L5000mm*W1900mm*H1900mm
Material:	t1.2mm galvanized plate
Thickness Insulation:	100mm
Power supply:	DIESEL
Voltage:	380V
Frequency:	50-60Hz
Door type:	Double sided
Warm-up time:	15 min. (180-220° C)
Homogeneity:	< ± 3°C if 185°C
Temperature stability:	< ± 1°C
Temperature max.	230° C
Transport:	Top
Air circulation:	Forced
Band of burner:	Italian Riello
Model of burner	RIELLO RS 20
burner capacity:	200,000 KCAL
power of motor	5.5KW
Warranty:	12 Months

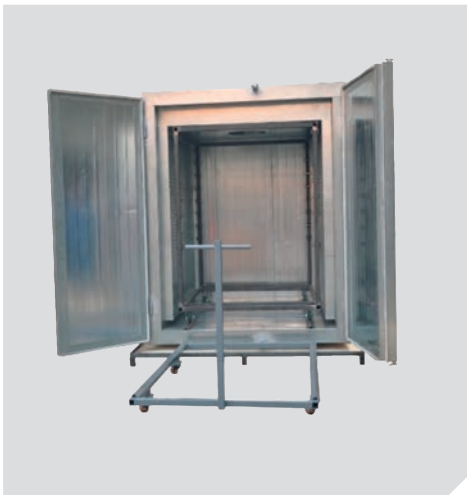


Model	PVE-4355-T
Worksize dimensions	450width x 500 height x 350 depth
Overall dimensions	500 width x 710 height x 500 depth
Power supply	Electric/ 3kw
Voltage/Frequency	110/220v(50-60hz)
Warm-up time	10-15 min. (180° C)
Temperature stability	< ± 1°C
Temperature max.	250° C
Warranty	12 months

# CURING OVENS



<b>Model</b>	<b>PVE-1688</b>
Worksize dimensions	845width x 1600 height x 845 depth
Overall dimensions	1400 width x 2200 height x 1100 depth
Power supply	Electric/ 6.5kw
Voltage/Frequency	110V/220v(50-60hz)
Warm-up time	15-30 min. (180° C)
Temperature stability	< ± 3-5°C
Temperature max.	250° C
Ventilation performance	805-1677m3/h
Motor power	0.55kw
Circulation/ Air flow	Vertical ,Variable through holes on the walls
Warranty	12 months



<b>Model</b>	<b>PVE-1864</b>
Worksize dimensions	1600width x 1800 height x 1400 depth
Overall dimensions	1900 width x 2200 height x 1700 depth
Power supply	Electric/ 12kw
Voltage/Frequency	380V/220v(50-60hz)
Warm-up time	15-30 min. (180° C)
Temperature stability	< ± 3-5°C
Temperature max.	250° C
Ventilation performance	805-1677m3/h
Motor power	0.75kw
Circulation/ Air flow	Vertical ,Variable through holes on the walls
Transportation	Trolley
Warranty	12 months

800X1000X1000

1100W\*1800H\*1200D

1000width x 800 depth x 1500 height 1500width x 1600 depth x 1800 height

900width x 1000 depth x 1000 height 2000width x 2000 depth x 2000 height

1000width x 1000 depth x 1000 height 2100width x 1500 depth x 2000 height

1000width x 1000 depth x 1500 height 2000width x 6000 depth x 2000 height

1000width x 1000 depth x 1800 height 1800width x 3500 depth x 1800 height

1100width x 1200 depth x 1800 height 1600width x 3000 depth x 1700 height

1200width x 1050 depth x 1900 height 1500width x 3000 depth x 1650 height

1500width x 1500 depth x 1500 height 1650width x 3200 depth x 1700 height

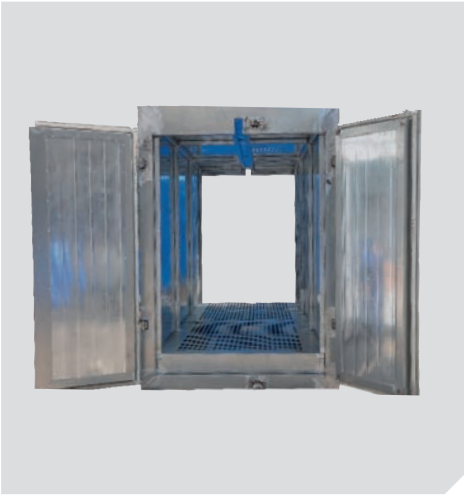
1500width x 1800 depth x 1500 height 4000X1500X2000

1800width x 1800 depth x 1800 height 3100X1900X1950

2000x4100x4700

L3.1xW2.4xH2.4

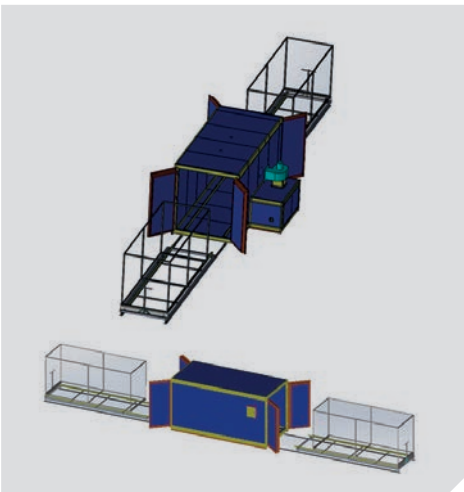
# CURING OVENS



<b>Model</b>	<b>PVE-2447</b>
Worksize dimensions	1200width x 1700 height x 3200 depth
Overall dimensions	1407 width x 2203 height x 3424depth
Power supply	Electric/ 40kw
Voltage/Frequency	As required
Warm-up time	15-30 min. (180° C)
Temperature stability	< ± 3-5°C
Temperature max.	250° C
Ventilation performance	805-1677m3/h
Fan Motor power	2.2kw
Circulation/ Air flow	Vertical ,Variable through holes on the walls
Transportation	Trolley on top
Warranty	12 months



<b>Model</b>	<b>PVE-0813 indirect fired heater</b>
Worksize dimensions	800 width x 1500 height x 3000 depth
Overall dimensions	1200 width x 1400 height x 3500 depth
Power supply	LPG/Natural gas /diesel
Voltage/Frequency	380V(50-60hz)
Warm-up time	15-30 min. (180° C)
Temperature stability	< ± 3.0-6°C
Temperature max.	250° C
Burner	Italy Riello, 10,000cal
Circulation/ Air flow	Vertical ,Variable through holes on the walls
Ventilation performance	1131-2565m3/h
Motor power	1.5kW
Warranty	12 months



<b>Model</b>	<b>PVE-5219</b>
Worksize dimensions	1900 width x 1900 height x 5000 depth
Overall dimensions	2100 width x 2200 height x 5200 depth
Power supply	LPG/Gas/Diesel
Voltage/Frequency	380V/220v(50-60hz)
Warm-up time	15-30 min. (180° C)
Temperature stability	< ± 3.0-6°C
Temperature max.	250° C
Transport	Two trolley
Burner	Two stage fire, Italy Riello, 10,000cal
Circulation/ Air flow	Vertical ,Variable through holes on the walls
Ventilation performance	8288-16576m3/h
Motor power	7,5kW
Warranty	12 months
Price	20 900 €



# PERCOTOP® FOR NEW BUSINESS OPPORTUNITIES

## INDUSTRIAL COATINGS

» More and more bodyshops are including the coating of industrial objects in their services. What this means can vary greatly – from the coating of different substrates to the request for certain degrees of gloss or effects. The PercoTop® system for industrial coating adapts flexibly to customer requests while consisting of a limited range of products.

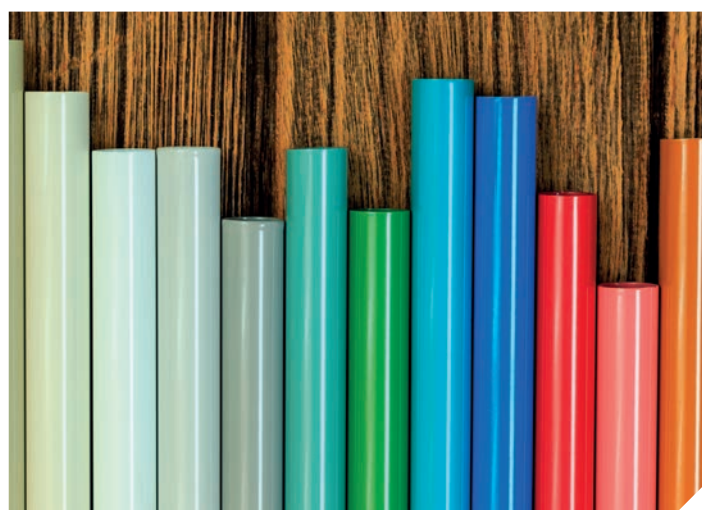


## MODULAR SYSTEM

» If you already use the Permafleet® commercial vehicle mixing system, you'll find it even easier, as the PercoTop® mixing system is based on it. With just a few extra PercoTop® mixing concentrates plus nine binders and the associated hardeners, you have everything you need to give industrial objects high-quality, value-enhancing coatings.

## COLOR DIVERSITY

» Another advantage is that a wide range of colors is immediately available at all times. All the mixing concentrates are standardised so that you achieve high color accuracy and good reproducibility with later repairs.



## READY MIXING

» If you don't have your own mixing system, you can order the colors with the respective binders (e.g. PUR, acrylic or synthetic resin) straight from your dealer.

## UNIVERSAL PRIMERS

» As an addition to the system, two primers are available with which you can coat most substrates.



# PERCOTOP® TOP COAT

## PUR

- » PercoTop® PUR Binder
- » PercoTop® PUR Matt Binder
- » PercoTop® 449 Structure Binder
- 2K top coat (polyurethane)
- High mechanical and chemical resistance
- For indoor and outdoor applications
- Suitable on primed substrates
- PUR Binder: five degrees of gloss are possible – high gloss to matt
- PUR Matt Binder: for extremely matt surfaces
- PUR Structure Binder: for textured surfaces

## ACRYLIC 100

- » PercoTop® Acryl 100 Binder
- Glossy 2K top coat (polyacrylate-based)
- High UV-stability
- Five degrees of gloss – high gloss to matt

## ACRYLIC 1-COAT

- » PercoTop® 611 DTM Binder
- Glossy 2K top coat (polyacrylate-based)
- For 1-coat application / without primer
- Apply direct onto steel, aluminum and zinc
- For indoor and outdoor applications
- Five degrees of gloss – high gloss to matt

## STONE CHIP PROTECTION 540

- 2K top coat (polyacrylate-based)
- High mechanical strength
- Improved for pump application

## IRON MICA

- » PercoTop® 531 MIO Binder
- 2K top coat (polyacrylate-based)
- High mechanical and chemical strength
- Typical iron mica gloss and effect
- High weather resistance

## ALKYD/SYNTHETIC RESIN

- » PercoTop® KH Alkyd Binder
- High-gloss 1K top coat (alkyd / synthetic resin)
- Suitable for indoors and outdoors
- Also suitable for rolling and brushing
- Alkyd Accelerator improves complete drying and permits faster recoating
- Five degrees of gloss – high gloss to matt

## EPOXY

- » PercoTop® EP Binder
- 2K epoxy system
- Suitable for special applications in interiors
- For objects with extreme surface hardness and high mechanical and chemical resistance, e.g. floors, machines
- Three degrees of gloss – glossy to matt

## NITROCELLULOSE

- » PercoTop® NKL Binder
- 1K top coat (nitrocellulose)
- Suitable for indoors
- Quick air drying
- Four degrees of gloss – glossy to matt

# PERCOTOP® INDUSTRIAL COATING

Recommended paint systems for steel substrates DIN EN ISO 12944

Class	Pretreatment	Primer	Topcoat
C1 S/M/L	bare metal and degreased	PercoTop® Primer 010 CS310 > 25 µm	PercoTop® 9600, 9700, 449, HS, 611, PUR, MIO > 40 µm
C2 S	bare metal and degreased	PercoTop® Primer 040 CS381 PercoTop® EP > 40 µm	PercoTop® 9600, 9700, 449, HS, 611, PUR, MIO > 40 µm
C2 M	bare metal and degreased	PercoTop® Primer 040 CS381 PercoTop® EP > 80 µm	PercoTop® 9600, 9700, 449, HS, 611, PUR, MIO > 40 µm
C2 L	SA 2.5	PercoTop® Primer 040 CS381 PercoTop® EP > 80 µm	PercoTop® 9600, 9700, 449, HS, 611, PUR, MIO > 80 µm
C3 S	bare metal and degreased	PercoTop® Primer 040 CS381 PercoTop® EP > 80 µm	PercoTop® 9600, 9700, 449, HS, 611, PUR, MIO > 40 µm
C3 M	SA 2.5	PercoTop® Primer 040 CS381 PercoTop® EP > 80 µm	PercoTop® 9600, 9700, 449, HS, PUR, MIO > 80 µm
C3 L	SA 2.5	PercoTop® Primer 040 CS381 PercoTop® EP > 80 µm	PercoTop® 9600, 9700, 449, HS, PUR, MIO > 120 µm

## CORROSIVITY CATEGORIES

C1: insignificant	Outside areas:	Interior areas:
	Not applicable	Heated buildings with neutral atmosphere (e.g. office, school, hotel).
C2: low	Outside areas:	Interior areas:
	Atmosphere with low environmental impact. Mainly rural areas.	Unheated buildings where condensation can occur (e.g. warehouses, gymnasiums).
C3: medium	Outside areas:	Interior areas:
	Urban and industrial atmosphere, low pollution by sulphur dioxide. Coastal areas with low salt impact.	Production facilities with high humidity and some air pollution (e.g. laundries, breweries).

# PERCOTOP® INDUSTRIAL COATING

Recommended paint systems for steel substrates DIN EN ISO 12944

Class	Pretreatment	Primer	Topcoat
C4 S	SA 2.5	PercoTop® Wash Primer CS307 > 10 µm + PercoTop® Primer 040 > 80 µm	PercoTop® 9600, 9700, 449, HS, 611, PUR, MIO > 40 µm
C4 M	SA 2.5	CS381 PercoTop® EP > 40 µm + PercoTop® Primer 040 > 80 µm	PercoTop® 9600, 9700, 449, HS, 611, PUR, MIO > 40 µm
C4 L	SA 2.5	CS382 PercoTop® Primer 053 > 40 µm + CS381 PercoTop® EP > 80 µm	PercoTop® 9600, 9700, 449, HS, 611, PUR, MIO > 40 µm
C5-IS	SA 2.5	CS582 PercoTop® EP ZP > 80 µm + CS581 PercoTop® EP MIO ICM > 80 µm	PercoTop® 9600, 9700, 449, HS, 611, PUR, MIO > 80 µm
C5-IM	SA 2.5	CS382 PercoTop® Primer Surfacer 053 > 80 µm + CS581 PercoTop® EP MIO ICM > 80 µm	PercoTop® 9600, 9700, 449, HS, 611, PUR, MIO > 40 µm
C5-IL	SA 2.5	CS382 PercoTop® Primer Surfacer 053 > 80 µm + CS591 PercoTop® EP HS PCM > 160 µm	PercoTop® 9600, 9700, 449, HS, PUR, MIO > 80 µm

## CORROSIVITY CATEGORIES

C4: high		Outside areas: Industrial areas and coastal regions with low salt impact.	Interior areas: Chemical plants, swimming pools, objects above sea water.
C5 - I: very high	Industry	Outside areas: Industrial areas with high humidity and aggressive atmosphere.	Interior areas: Areas with almost constant condensa- tion and strong pollution.
C5 - M: very high	Sea	Outside areas: Coastal and off-shore areas with high salt impact.	Interior areas: Areas with almost constant condensa- tion and strong pollution.

IN ADDITION, THE CORROSIVITY CATEGORIES ARE DIVIDED INTO 3 TIME SPANS:

PROTECTION TIME:		Time span:
S	short	2-5 years
M	medium	5-15 years
L	long	> 15 years

# PERCOTOP®-SYSTEM: INDUSTRIAL COATING FOR PROFESSIONALS

## PERMAFLEET® MIXING CONCENTRATES 600 + PERCOTOP® MIXING CONCENTRATES + PERCOTOP® BINDER

Acrylic 100 Top Coat	PUR Top Coat	PUR Matt Top Coat	PUR Textured Top Coat	Acrylic 1-Coat Top Coat
<b>PercoTop® Acrylic 100 Binder CS950</b>	<b>PercoTop® PUR Binder CS920</b>	<b>PercoTop® PUR Matt Binder CS923</b>	<b>PercoTop® 449 Structure Binder CS949</b>	<b>PercoTop® 611 DTM Binder CS911</b>
<ul style="list-style-type: none"> <li>• Glossy 2K top coat (polyacrylate)</li> <li>• High UV-Stability</li> </ul>	<ul style="list-style-type: none"> <li>• Glossy 2K top coat (polyurethane)</li> <li>• High mechanical and chemical resistance</li> <li>• For interior and exterior applications</li> <li>• Suitable on primed substrates</li> </ul>	<ul style="list-style-type: none"> <li>• For extremely matt surfaces</li> <li>• 2K top coat (polyurethane)</li> <li>• High mechanical and chemical resistance</li> <li>• For interior and exterior applications</li> <li>• Suitable on primed substrates</li> </ul>	<ul style="list-style-type: none"> <li>• For textured surfaces</li> <li>• 2K top coat (polyurethane)</li> <li>• High mechanical and chemical resistance</li> <li>• For interior and exterior applications</li> <li>• Suitable on primed substrates</li> </ul>	<ul style="list-style-type: none"> <li>• Glossy 2K top coat (polyacrylate)</li> <li>• For 1-coat application/ without primer</li> <li>• Applied straight onto steel, aluminium and zinc</li> <li>• For interior and exterior applications</li> </ul>
<b>PercoTop® Matting Agent 2K CS204</b>	<b>PercoTop® Matting Agent 2K CS204</b>			<b>PercoTop® Matting Agent DTM CS203</b>
5 degrees of gloss – from high gloss to matt	5 degrees of gloss – from high gloss to matt			5 degrees of gloss – from high gloss to matt
<b>PercoTop® Activator Fast CS702</b>				
5:1 vol. /5:1 wt.	5:1 vol. /5:1 wt.	6:1 vol. /7:1 wt.	5:1 vol. /5:1 wt.	
<b>PercoTop® Activator Standard CS701</b>			<b>PercoTop® Activator 3840 CS704</b>	
2:1 vol. /2:1 wt.	2:1 vol. /2:1 wt.	3:1 vol. /3:1 wt.	4:1 vol. /5:1 wt.	9:1 vol. /10:1 wt.
<b>PercoTop® Thinner Standard CS600</b>				
<b>PercoTop® Thinner 2K CS602 / Thinner Fast CS603</b>				
Substrate pretreatment: PercoTop® Primer 010 1K, Primer 040 HS 2K + PercoTop® Activator 4040 CS705 / Activator 3840 CS 704				

# PERCOTOP®-SYSTEM: INDUSTRIAL COATING FOR PROFESSIONALS

## PERMAFLEET® MIXING CONCENTRATES 600 + PERCOTOP® MIXING CONCENTRATES + PERCOTOP® BINDER

Stone-Chip Protection Paint	Iron Mica Top Coat	Alkyd Synthetic Resin Top Coat	Nitrocellulose Top Coat	Epoxy Top Coat
PercoTop® 540 449 Structure Binder CS949 Acrylic 100 Binder CS950	PercoTop® 531 MIO Binder CS912	PercoTop® Alkyd Binder CS991 Siccative 376 CS212	PercoTop® NKL Binder CS990	PercoTop® EP Binder CS980
<ul style="list-style-type: none"> <li>• 2K top coat (polyacrylate) with stone-chip protection</li> <li>• High mechanical strength</li> <li>• Optimised for application with large devices</li> </ul>	<ul style="list-style-type: none"> <li>• 2K top coat (polyacrylate) with micaceous iron oxide</li> <li>• High mechanical and chemical strength</li> <li>• Typical gloss and effect formation</li> <li>• Excellent weather resistance</li> </ul>	<ul style="list-style-type: none"> <li>• High-gloss 1K top coat (alkyd synthetic resin)</li> <li>• Suitable for interiors and exteriors</li> <li>• Also amenable to rolling and brushing</li> <li>• Alkyd Accelerator improves hard drying</li> </ul>	<ul style="list-style-type: none"> <li>• 1K top coat (nitrocellulose)</li> <li>• Suitable for interiors</li> <li>• Rapid air drying</li> </ul>	<ul style="list-style-type: none"> <li>• 2K epoxy system</li> <li>• Suitable for special applications in interiors</li> <li>• For objects with extreme surface hardness and high mechanical and chemical resistance e.g. floors, machines</li> </ul>
PercoTop® Matting Agent 2K CS204		PercoTop® Matting Agent 1K CS201	PercoTop® Matting Agent 1K CS201	PercoTop® Matting Agent 1K CS201
		5 degrees of gloss – from high gloss to matt	4 degrees of gloss – from glossy to matt	3 degrees of gloss – from glossy to matt
		Synthetic Resin Alkyd Accelerator		PercoTop® Activator EP CS780
		20%		5:1 vol. /7:1 wt.
5:1 vol. /6:1 wt.	7:1 vol. /10:1 wt.	PercoTop® Thinner Standard CS600		
				PercoTop® Thinner EP CS680
PercoTop® Thinner 2K CS602		PercoTop® Thinner 1K CS601		

Substrate pretreatment: PercoTop® Primer 010 1K, Primer 040 HS 2K + PercoTop® Activator 4040 CS705 / Activator 3840 CS 704



# PERCOTOP® WET PAINTING



PercoTop®	Code	Art. No./Art.-Nr.	Can Size/Inhalt
PERCOTOP® MATTING AGENT 1K	CS201	1250057109	3,5 L
PERCOTOP® MATTING AGENT DTM	CS203	1250062158	3,5 L
PERCOTOP® MATTING AGENT 2K	CS204	1250057108	3,5 L
PERCOTOP® SIKKATIV 376	CS212	1250057035	1 L
ALKYD ACCELERATOR		1250072286	1 L
BRUSHING ADDITIVE		1250062914	1 L
MULTITEX 30 ADDITIVE		1250062996	15 kg
MULTITEX 50 ADDITIVE		1250062995	20 kg
MULTITEX 90 ADDITIVE		1250062994	20 kg
MULTITEX 200 ADDITIVE		1250062993	20 kg

Readymix PercoTop® PUR Structure Topcoat 449:	Art. No./Art.-Nr.	Can Size/Inhalt
RAL 7035 LIGHT GREY/HELLGRAU	1250061514	5 kg
RAL 9010 WHITE/WEISS	1250061490	5 kg
RAL 9005 DEEP BLACK /TIEFSCHWARZ	1250061491	5 kg


Color Tools / Color Swatches / Farbtondokumentationen	Art. No./Art.-Nr.
SPIES HECKER RAL CLASSIC INDEX	496 0307 7
SPIES HECKER NCS INDEX / COLOR SWATCH	496 0380 1
PERCOTOP GLOSS- UND TEXTURE INDEX	499 0409 8

# PERCOTOP® WET PAINTING

PercoTop®	Code	Art. No./Art.-Nr.	Can Size/Inhalt
PERCOTOP® ACTIVATOR STANDARD	CS701	1250057034	1 kg
PERCOTOP® ACTIVATOR STANDARD	CS701	1250062688	5 L
PERCOTOP® ACTIVATOR FAST	CS702	1250057032	1 kg
PERCOTOP® ACTIVATOR 4040	CS705	1250057027	1 kg
PERCOTOP® ACTIVATOR 3840	CS704	1250057028	1 kg
PERCOTOP® ACTIVATOR EP	CS780	1250057020	1 kg
PERCOTOP® PRIMER 040 2K – RAL9010 WHITE/WEISS	CS342	1250058807	3,5 L
PERCOTOP® PRIMER 040 2K – RAL9010 WHITE/WEISS	CS342	1250057048	10 kg
PERCOTOP® PRIMER 040 2K – RAL7035 LIGHT GREY/HELLGRAU	CS340	1250057050	10 kg
PERCOTOP® PRIMER 040 2K – RAL9005 BLACK/SCHWARZ	CS343	1250057047	10 kg
PERCOTOP® PRIMER 040 2K – RAL6013 GREEN/GRÜN	CS341	1250057126	10 kg
PERCOTOP® PRIMER 040 2K – RAL 3003 RED/ROT	CS347	1250063404	20 kg
PERCOTOP® PRIMER 040 2K – COLOURLESS/FARBLOS	CS345	1250058808	3,5 L
PERCOTOP® PRIMER 010 1K – RAL9010 WHITE/WEISS	CS312	1250057054	3,5 L
PERCOTOP® PRIMER 010 1K – RAL9010 WHITE/WEISS	CS312	1250057053	20 kg
PERCOTOP® PRIMER 010 1K – RAL7035 LIGHT GREY/HELLGRAU	CS310	1250057058	3,5 L
PERCOTOP® PRIMER 010 1K – RAL7035 LIGHT GREY/HELLGRAU	CS310	1250057057	20 kg
PERCOTOP® PRIMER 010 1K – RAL9005 BLACK/SCHWARZ	CS313	1250057051	3,5 L
PERCOTOP® THINNER STANDARD	CS600	1250057119	5 L
PERCOTOP® THINNER STANDARD	CS600	1250057118	20 L
PERCOTOP® THINNER 2K	CS602	1250057115	5 L
PERCOTOP® THINNER FAST	CS603	1250057093	5 L
PERCOTOP® THINNER EP	CS680	1250057110	5 L
PERCOTOP® THINNER 1K	CS601	1250057116	5 L
PERCOTOP® MULTICLEANER	CS400	1250060382	5 L
PERCOTOP® SPECIAL CLEANER	CS410	1250060554	5 L



# PERCOTOP® SUBSTRATES SYSTEM POSTER

	PercoTop® Special Cleaner CS 410	PercoTop® Primer 010 1K
Iron , steel, cast iron		X
Stainless steel		
Galvanised steel		X
Aluminium, non-ferrous metals		X
Extruded aluminium		
Plastics: ABS, PC, PA, GR-UP, GRP, Plexiglas		X
Polystyrene		(X)
PVC, powder coatings	X	
Old paintwork		(X)
Wood, MDF, hardboard		
Mineral substrates		

- Test recommended for the given plastics.
- Recoatable with any PercoTop® topcoat .

# PERCOTOP® SUBSTRATES SYSTEM POSTER

PercoTop® Primer 040 HS 2K	Permafleet® EP Primer Surfacer 4400	Permafleet® 1:1 Wash Primer 3688
X	X	
	X	X plus Primer 040
X	X	
X		
		X plus Primer 040
X		
X		
X	X	
X	X	
X	X	

X = Recommended  
 (X) = Limited suitability, test recommended

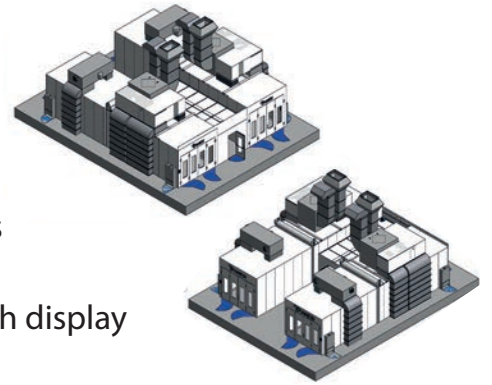


# WET PAINTING EQUIPMENT



## SPRAY BOOTH

- » Pressure automatic control by inverter devices
- » Customizable according all possible customer requests
- » Top and bottom lights
- » Electronic control panel with display



## FEATURE

- » We offer wide range of spray guns from different producers.
- » Pressure Spray Guns
- » Suction Spray Guns
- » Gravity Spray Guns
- » AUTOMATIC Spray Guns
- » Airbrushes
- » Industrial and Construction Pumps
- » Pressure Pots
- » Filtration System

SAGOLA 

DEVILBISS  
THE RIGHT WAY TO FINISH

SATA  
German Engineering

SAGOLA 



SATA  
German Engineering



## DUSTER

- » Provides cleaner air for worker environment
- » Quick return on capital equipment investment – less than 6 months
- » Energy Efficient – economical to operate
- » No ventilation or makeup air required
- » Powerful motor re-circulates air at over 3,000 cfm





# FILTERS

## FEATURE

» We offer wide range of filters for wet and powder coating. Also filters for pretreatment and for waste handling. Please contact for more detailed information.

## OUR PRODUCT RANGE INCLUDES:

### » Powder coating exhaust filters

All you have to do is let us know the outside diameter, inside diameter, height, and what type of ends your cartridge is using so we can quote you.

### » Cartridge Filters

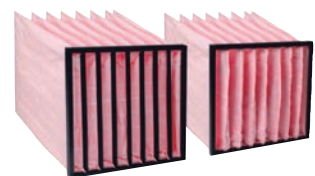
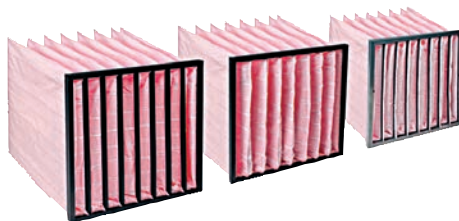
Our range of extraction filters can be used with all types of solvent based, water based and powder paints. These highly efficient filters are available with both fibre and media backing for a secondary level of filtration.

### » Air input filters

We offer the full range of filtration media, fibre, panels and roll filters in standard and custom sizes.

### » Panel Filters

### » And many others



# ACCESSORIES: PAINTING

## SONATRA EC WIPES:

» Wipes are all-purpose, engineered cloth wipes with exceptional absorbency, strength and low-linting properties, well-suited for the many clean-up and prep tasks in the hospitality in all industries.

- » Tough and durable, wet or dry.
- » Washes easily, yet is inexpensive enough to treat as a disposable.
- » Absorbent—soaks up to four times its weight in water.
- » Wipes dry.
- » Absorbs oil and solvents.
- » Low-linting.



Nonwoven cleaning wipes.



### 650ml Paint Preparation System

Spec:

\*The material of lids: PP

\*The material of liners: PE

\*The material of cap: pp

\*Capacity: 650ml

\*The adaptor used for connecting cup lid and spray gun(not include)

\*The Lid and Liner sits perfectly within the cup before being secured

with the threaded collar.

Include: 50pcs liner ,50pcs lid(190&125 micron) ,20pcs cap;



### 29201 Cotton Tack Rag

\* Use after sanding and between finish coats to remove dust, dirt and sanding residue.

\* Idea use for:Painting,Varnishing,Antiquing,Staining.

\* Wax and Silicone free

\* Compatible with all paints

\* Size: 18" x 36"

\* Material: 100% COTTON GAUZE

\* Economic Cotton mesh: 20\*24

\* Medium tack formulation

\* Color: Blue

1pc/polybag,500pcs/carton box;



### 28705 1L Pump Solvent Spray Bottle

\* Material:HDPE

\* Capacity:1L

\* Brass nozzle

\* Color:white

\* Viton "O" ring

\* Suitable for acid-base solution

1pc/pp bag with sticker;

20pcs/carton box;

# ALVIN PRODUCTS

## USES FOR LAB-METAL CAN BE FOUND IN MANY INDUSTRIES:

- » Powder Coaters
- » Foundries
- » Welders, Fabricators, Metalworkers
- » Transportation
- » Agriculture, Equipment
- » Welders, Woodworking / Wood turners
- » Construction, Transportation
- » Machine & Body Shops
- » Welders, Power Plants, Factories



### LAB-METAL

Ready-to-use metal repair and patching compound "the original metal putty"

Unit size

340 GMS; 680 GMS; 1.340 KGS;  
5.36 KGS



### LAB-SOLVENT

Thinner for Lab-metal

Unit size

0.5 LITER

3.8 LITER



### HI-TEMP LAB-METAL

Withstands temperatures to 538°C

Unit size

400 GMS

680 GMS





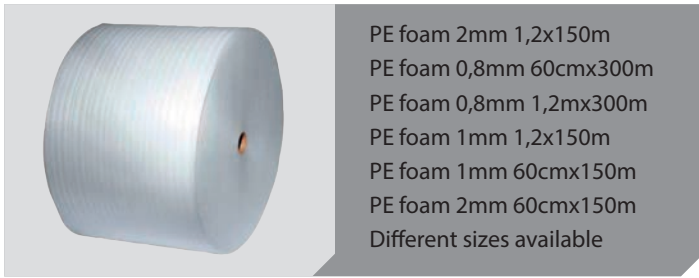
# PROTECTIVE GEAR

## FEATURE

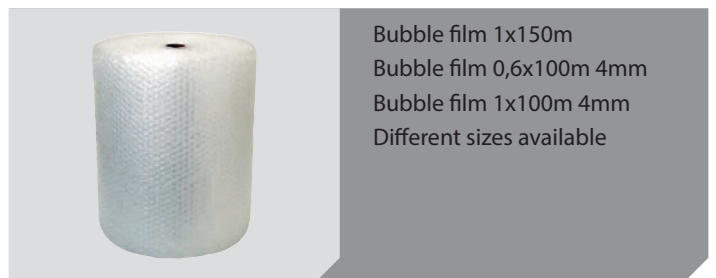
- » Protective gear
- » Gloves, masks
- » Spray overalls



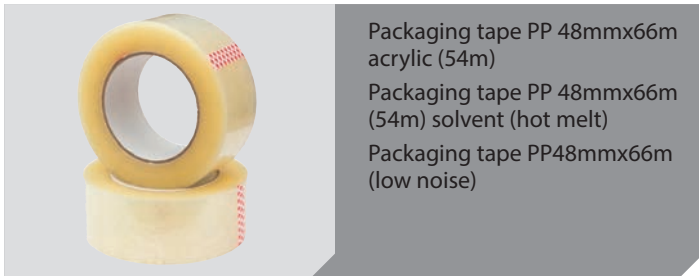
# PACKAGING MATERIAL



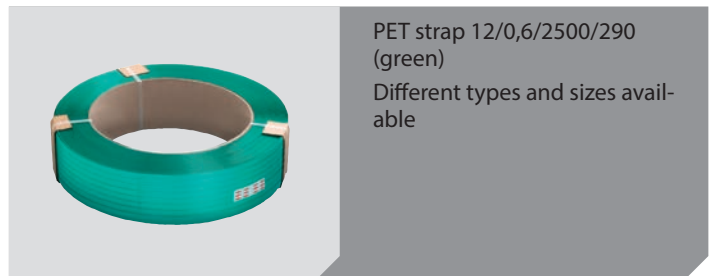
PE foam 2mm 1,2x150m  
 PE foam 0,8mm 60cmx300m  
 PE foam 0,8mm 1,2mx300m  
 PE foam 1mm 1,2x150m  
 PE foam 1mm 60cmx150m  
 PE foam 2mm 60cmx150m  
 Different sizes available



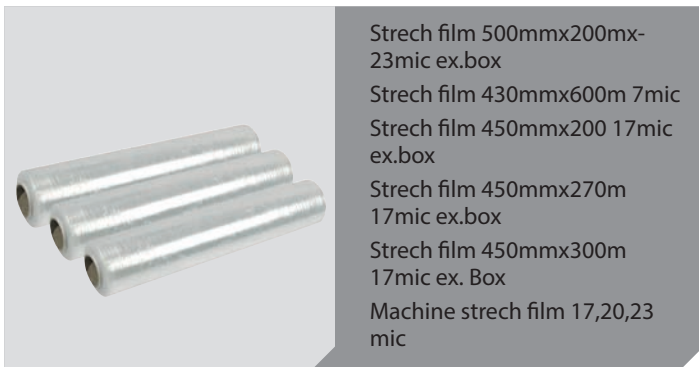
Bubble film 1x150m  
 Bubble film 0,6x100m 4mm  
 Bubble film 1x100m 4mm  
 Different sizes available



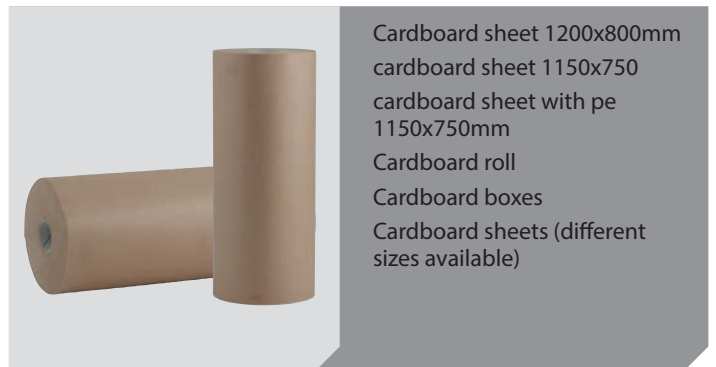
Packaging tape PP 48mmx66m acrylic (54m)  
 Packaging tape PP 48mmx66m (54m) solvent (hot melt)  
 Packaging tape PP48mmx66m (low noise)



PET strap 12/0,6/2500/290 (green)  
 Different types and sizes available



Stretch film 500mmx200mx-23mic ex.box  
 Stretch film 430mmx600m 7mic  
 Stretch film 450mmx200 17mic ex.box  
 Stretch film 450mmx270m 17mic ex.box  
 Stretch film 450mmx300m 17mic ex. Box  
 Machine stretch film 17,20,23 mic



Cardboard sheet 1200x800mm  
 cardboard sheet 1150x750  
 cardboard sheet with pe 1150x750mm  
 Cardboard roll  
 Cardboard boxes  
 Cardboard sheets (different sizes available)





# THE ENTIRE PRODUCT RANGE

- Powder Coatings
- PercoTop®
- Grinding wheels, grinding papers and tools, etc.
- Cleaning products, cloths, papers
- Paint strippers and graffiti removing chemicals
- Painter's supplies, masks, overalls, gloves, etc.
- Powder Coating Equipment and spare parts
- Wet Painting Equipment and spare parts
- Filters
- High temperature resistant putties for powder coating.
- Packaging Materials
- Hooks and racks
- Tapes for 3D printing and sandblasting
- High temperature resistant silicone masking products
- Masking tapes
- High temperature masking tapes
- Basically anything You might need for surface finishing job



## PINTAVÄRI EESTI OÜ

Sära tee 11/4, Tallinn 75312  
info@pintavari.ee  
Tel. +372 6556 118  
www.pintavari.ee

